

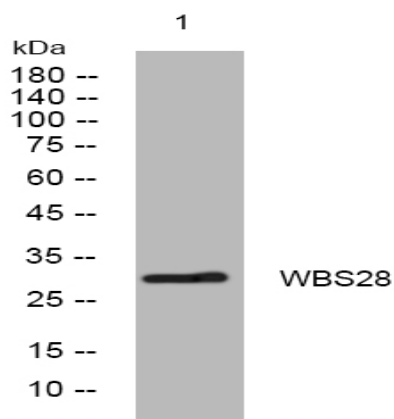
WBS28 rabbit pAb

Catalog No :	YT7530
Reactivity :	Human;Mouse
Applications :	WB
Target :	WBS28
Gene Name :	WBSCR28
Protein Name :	WBS28
Human Gene Id :	135886
Human Swiss Prot No :	Q6UE05
Mouse Gene Id :	76629
Mouse Swiss Prot No :	Q6UJB9
Immunogen :	Synthesized peptide derived from human WBS28 AA range: 25-75
Specificity :	This antibody detects endogenous levels of WBS28 at Human/Mouse
Formulation :	Liquid in PBS containing 50% glycerol, 0.5% BSA and 0.02% sodium azide.
Source :	Polyclonal, Rabbit,IgG
Dilution :	WB 1:500-2000
Purification :	The antibody was affinity-purified from rabbit antiserum by affinity-chromatography using epitope-specific immunogen.
Concentration :	1 mg/ml
Storage Stability :	-15°C to -25°C/1 year(Do not lower than -25°C)

Molecularweight : 29kD

Subcellular Location : Membrane ; Multi-pass membrane protein .

Products Images



Western blot analysis of lysates from HeLa cells, primary antibody was diluted at 1:1000, 4° over night