

S36A2 rabbit pAb

Catalog No :	YT7518
Reactivity :	Human;Mouse;Rat
Applications :	WB
Target :	S36A2
Fields :	>>Protein digestion and absorption
Gene Name :	SLC36A2 PAT2 TRAMD1
Protein Name :	S36A2
Human Gene Id :	153201
Human Swiss Prot No :	Q495M3
Mouse Gene Id :	246049
Mouse Swiss Prot No :	Q8BHK3
Rat Gene Id :	246235
Rat Swiss Prot No :	Q8K415
Immunogen :	Synthesized peptide derived from human S36A2 AA range: 130-180
Specificity :	This antibody detects endogenous levels of S36A2 at Human/Mouse/Rat
Formulation :	Liquid in PBS containing 50% glycerol, 0.5% BSA and 0.02% sodium azide.
Source :	Polyclonal, Rabbit,IgG
Dilution :	WB 1[?]500-2000
Purification :	The antibody was affinity-purified from rabbit antiserum by affinity-

chromatography using epitope-specific immunogen.

Concentration : 1 mg/ml

Storage Stability : -15°C to -25°C/1 year (Do not lower than -25°C)

Molecularweight : 53kD

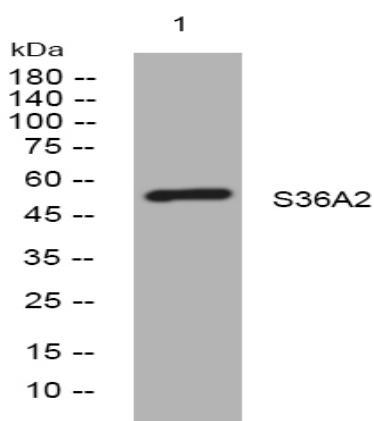
Background : This gene encodes a pH-dependent proton-coupled amino acid transporter that belongs to the amino acid auxin permease 1 protein family. The encoded protein primarily transports small amino acids such as glycine, alanine and proline. Mutations in this gene are associated with iminoglycinuria and hyperglycinuria. [provided by RefSeq, Sep 2010],

Function : function:Involved in a pH-dependent electrogenic neuronal transport and sequestration of small amino acids amino acids such as glycine, alanine and proline. Inhibited by sarcosine.,similarity:Belongs to the amino acid/polyamine transporter 2 family.,tissue specificity:Abundantly expressed in kidney and muscle.,

Subcellular Location : Cell membrane ; Multi-pass membrane protein . Endoplasmic reticulum membrane . Recycling endosome membrane .

Expression : Abundantly expressed in kidney and muscle. Expressed in the S1 segment of the proximal tubule close to the glomerulus.

Products Images



Western blot analysis of lysates from 293T cells, primary antibody was diluted at 1:1000, 4° over night