

GGNB2 rabbit pAb

Catalog No :	YT7517
Reactivity :	Human;Mouse;Rat
Applications :	WB
Target :	GGNB2
Gene Name :	GGNBP2 LCRG1 LZK1 ZNF403
Protein Name :	GGNB2
Human Gene Id :	79893
Human Swiss Prot No :	Q9H3C7
Mouse Gene Id :	217039
Mouse Swiss Prot No :	Q5SV77
Rat Gene Id :	360584
Rat Swiss Prot No :	Q6GVH5
Immunogen :	Synthesized peptide derived from human GGNB2 AA range: 225-275
Specificity :	This antibody detects endogenous levels of GGNB2 at Human/Mouse/Rat
Formulation :	Liquid in PBS containing 50% glycerol, 0.5% BSA and 0.02% sodium azide.
Source :	Polyclonal, Rabbit,IgG
Dilution :	WB 1:500-2000
Purification :	The antibody was affinity-purified from rabbit antiserum by affinity-chromatography using epitope-specific immunogen.

Concentration : 1 mg/ml

Storage Stability : -15°C to -25°C/1 year(Do not lower than -25°C)

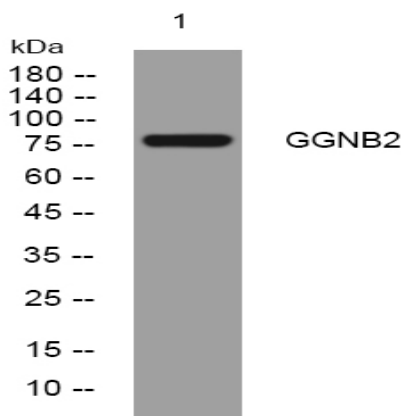
Molecularweight : 77kD

Function : function:May be involved in spermatogenesis.,miscellaneous:Strongly down-regulated in 40% of primary laryngeal carcinoma and in 6 of 10 various cancer cell lines.,subcellular location:Associated with vesicular structures.,subunit:Interacts with GGN.,tissue specificity:Expressed in heart, brain, placenta, lung, liver, skeletal muscle, kidney and pancreas. Expressed more abundantly in heart, pancreas and skeletal muscle.,

Subcellular Location : Cytoplasmic vesicle . Associated with vesicular structures. .

Expression : Expressed in heart, brain, placenta, lung, liver, skeletal muscle, kidney and pancreas. Expressed more abundantly in heart, pancreas and skeletal muscle.

Products Images



Western blot analysis of lysates from HpeG2 cells, primary antibody was diluted at 1:1000, 4° over night