

AP3M2 rabbit pAb

Catalog No :	YT7514
Reactivity :	Human;Mouse;Rat
Applications :	WB
Target :	AP3M2
Fields :	>>Lysosome
Gene Name :	AP3M2
Protein Name :	AP3M2
Human Gene Id :	10947
Human Swiss Prot No :	P53677
Mouse Gene Id :	64933
Mouse Swiss Prot No :	Q8R2R9
Rat Gene Id :	140667
Rat Swiss Prot No :	P53678
Immunogen :	Synthesized peptide derived from human AP3M2 AA range: 274-324
Specificity :	This antibody detects endogenous levels of AP3M2 at Human/Mouse/Rat
Formulation :	Liquid in PBS containing 50% glycerol, 0.5% BSA and 0.02% sodium azide.
Source :	Polyclonal, Rabbit,IgG
Dilution :	WB 1[?]500-2000
Purification :	The antibody was affinity-purified from rabbit antiserum by affinity-

chromatography using epitope-specific immunogen.

Concentration : 1 mg/ml

Storage Stability : -15°C to -25°C/1 year (Do not lower than -25°C)

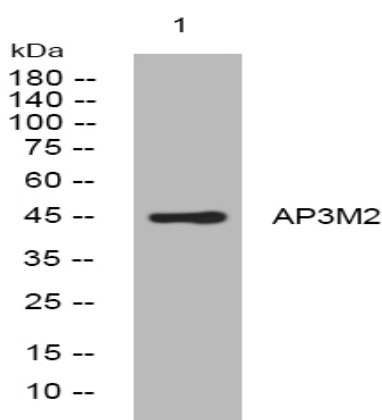
Molecularweight : 46kD

Background : This gene encodes a subunit of the heterotetrameric adaptor-related protein complex 3 (AP-3), which belongs to the adaptor complexes medium subunits family. The AP-3 complex plays a role in protein trafficking to lysosomes and specialized organelles. Multiple alternatively spliced variants, encoding the same protein, have been identified. [provided by RefSeq, Aug 2008],

Function : function:Part of the AP-3 complex, an adaptor-related complex which is not clathrin-associated. The complex is associated with the Golgi region as well as more peripheral structures. It facilitates the budding of vesicles from the Golgi membrane and may be directly involved in trafficking to lysosomes.,similarity:Belongs to the adaptor complexes medium subunit family.,similarity:Contains 1 MHD (mu homology) domain.,subunit:Adaptor protein complex 3 (AP-3) is an heterotetramer composed of two large adaptins (delta-type subunit AP3D1 and beta-type subunit AP3B1 or AP3B2), a medium adaptin (mu-type subunit AP3M1 or AP3M2) and a small adaptin (sigma-type subunit APS1 or AP3S2),

Subcellular Location : Golgi apparatus. Cytoplasmic vesicle membrane ; Peripheral membrane protein ; Cytoplasmic side . Component of the coat surrounding the cytoplasmic face of coated vesicles located at the Golgi complex. .

Products Images



Western blot analysis of lysates from MCF-7 cells, primary antibody was diluted at 1:1000, 4° over night