

**ZBT46 rabbit pAb**

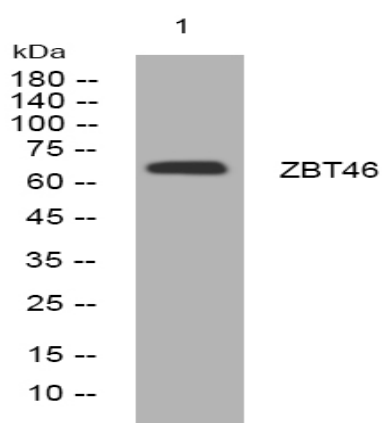
<b>Catalog No :</b>	YT7511
<b>Reactivity :</b>	Human;Mouse
<b>Applications :</b>	WB
<b>Target :</b>	ZBT46
<b>Gene Name :</b>	ZBTB46 BTBD4 ZNF340
<b>Protein Name :</b>	ZBT46
<b>Human Gene Id :</b>	140685
<b>Human Swiss Prot No :</b>	Q86UZ6
<b>Mouse Gene Id :</b>	72147
<b>Mouse Swiss Prot No :</b>	Q8BID6
<b>Immunogen :</b>	Synthesized peptide derived from human ZBT46 AA range: 108-158
<b>Specificity :</b>	This antibody detects endogenous levels of ZBT46 at Human/Mouse
<b>Formulation :</b>	Liquid in PBS containing 50% glycerol, 0.5% BSA and 0.02% sodium azide.
<b>Source :</b>	Polyclonal, Rabbit,IgG
<b>Dilution :</b>	WB 1:500-2000
<b>Purification :</b>	The antibody was affinity-purified from rabbit antiserum by affinity-chromatography using epitope-specific immunogen.
<b>Concentration :</b>	1 mg/ml
<b>Storage Stability :</b>	-15°C to -25°C/1 year(Do not lower than -25°C)

**Molecularweight :** 65kD

**Function :** function:May be involved in transcriptional regulation.,similarity:Contains 1 BTB (POZ) domain.,similarity:Contains 2 C2H2-type zinc fingers.,

**Subcellular Location :** Nucleus .

## Products Images



Western blot analysis of lysates from MCF-7 cells, primary antibody was diluted at 1:1000, 4° over night