

TMPS2 rabbit pAb

Catalog No :	YT7507
Reactivity :	Human;Mouse
Applications :	WB
Target :	TMPS2
Fields :	>>Influenza A;>>Coronavirus disease - COVID-19;>>Transcriptional misregulation in cancer;>>Prostate cancer
Gene Name :	TMPRSS2 PRSS10
Protein Name :	TMPS2
Human Gene Id :	7113
Human Swiss Prot No :	O15393
Mouse Gene Id :	50528
Mouse Swiss Prot No :	Q9JIQ8
Immunogen :	Synthesized peptide derived from human TMPS2 AA range: 98-148
Specificity :	This antibody detects endogenous levels of TMPS2 at Human/Mouse
Formulation :	Liquid in PBS containing 50% glycerol, 0.5% BSA and 0.02% sodium azide.
Source :	Polyclonal, Rabbit,IgG
Dilution :	WB 1[?]500-2000
Purification :	The antibody was affinity-purified from rabbit antiserum by affinity-chromatography using epitope-specific immunogen.
Concentration :	1 mg/ml

Storage Stability : -15°C to -25°C/1 year(Do not lower than -25°C)

Molecularweight : 54kD

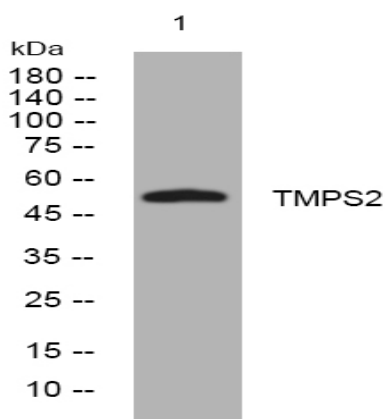
Background : This gene encodes a protein that belongs to the serine protease family. The encoded protein contains a type II transmembrane domain, a receptor class A domain, a scavenger receptor cysteine-rich domain and a protease domain. Serine proteases are known to be involved in many physiological and pathological processes. This gene was demonstrated to be up-regulated by androgenic hormones in prostate cancer cells and down-regulated in androgen-independent prostate cancer tissue. The protease domain of this protein is thought to be cleaved and secreted into cell media after autocleavage. Alternatively spliced transcript variants encoding different isoforms have been found for this gene. [provided by RefSeq, Sep 2008],

Function : similarity:Belongs to the peptidase S1 family.,similarity:Contains 1 LDL-receptor class A domain.,similarity:Contains 1 peptidase S1 domain.,similarity:Contains 1 SRCR domain.,subcellular location:Activated by cleavage and secreted.,tissue specificity:Expressed strongly in small intestine. Also expressed in prostate, colon, stomach and salivary gland.,

Subcellular Location : Cell membrane ; Single-pass type II membrane protein .; [Transmembrane protease serine 2 catalytic chain]: Secreted . Activated by cleavage and secreted.

Expression : Expressed in several tissues that comprise large populations of epithelial cells with the highest level of transcripts measured in the prostate gland. Expressed in type II pneumocytes in the lung (at protein level). Expressed strongly in small intestine. Also expressed in colon, stomach and salivary gland. Coexpressed with ACE2 within lung type II pneumocytes, ileal absorptive enterocytes, intestinal epithelial cells, cornea, gallbladder and nasal goblet secretory cells (Ref.21).

Products Images



Western blot analysis of lysates from THP-1 cells, primary antibody was diluted at 1:1000, 4° over night