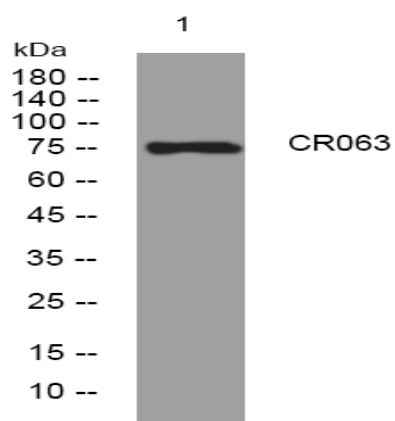


CR063 rabbit pAb

Catalog No :	YT7506
Reactivity :	Human
Applications :	WB
Target :	CR063
Gene Name :	C18orf63
Protein Name :	CR063
Human Gene Id :	644041
Human Swiss Prot No :	Q68DL7
Immunogen :	Synthesized peptide derived from human CR063. AA range 21-70
Specificity :	This antibody detects endogenous levels of CR063 at Human
Formulation :	Liquid in PBS containing 50% glycerol, 0.5% BSA and 0.02% sodium azide.
Source :	Polyclonal, Rabbit,IgG
Dilution :	WB 1:500-2000
Purification :	The antibody was affinity-purified from rabbit antiserum by affinity-chromatography using epitope-specific immunogen.
Concentration :	1 mg/ml
Storage Stability :	-15°C to -25°C/1 year(Do not lower than -25°C)
Molecularweight :	75kD

Products Images



Western blot analysis of lysates from CACO2 cells, primary antibody was diluted at 1:1000, 4° over night