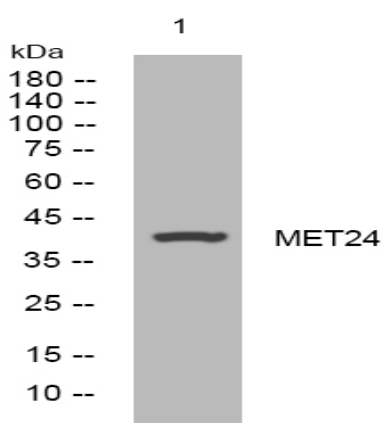


MET24 rabbit pAb

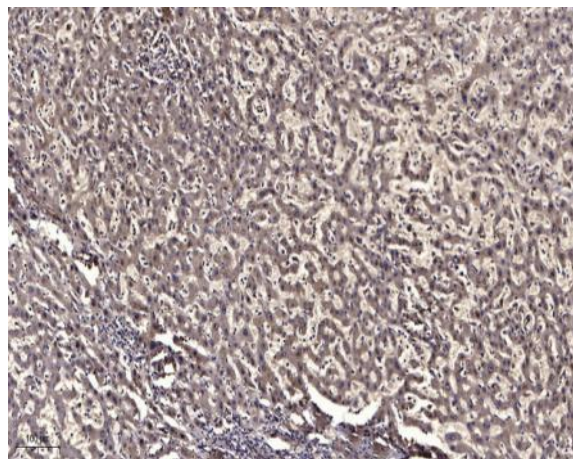
Catalog No :	YT7502
Reactivity :	Human;Mouse;Rat
Applications :	WB;ELISA;IHC
Target :	MET24
Gene Name :	METTTL24 C6orf186
Protein Name :	MET24
Human Gene Id :	728464
Human Swiss Prot No :	Q5JXM2
Mouse Gene Id :	327747
Mouse Swiss Prot No :	Q8CCB5
Rat Gene Id :	499465
Rat Swiss Prot No :	Q5BK01
Immunogen :	Synthesized peptide derived from human MET24 AA range: 31-81
Specificity :	This antibody detects endogenous levels of MET24 at Human/Mouse/Rat
Formulation :	Liquid in PBS containing 50% glycerol, 0.5% BSA and 0.02% sodium azide.
Source :	Polyclonal, Rabbit,IgG
Dilution :	WB 1:500-2000;IHC 1:50-300; ELISA 2000-20000
Purification :	The antibody was affinity-purified from rabbit antiserum by affinity-chromatography using epitope-specific immunogen.

Concentration :	1 mg/ml
Storage Stability :	-15°C to -25°C/1 year(Do not lower than -25°C)
Molecularweight :	40kD
Function :	similarity:Belongs to the UPF0624 family.,
Subcellular Location :	Secreted .

Products Images



Western blot analysis of lysates from SH-SY5Y cells, primary antibody was diluted at 1:1000, 4° over night



Immunohistochemical analysis of paraffin-embedded human liver cancer. 1, Antibody was diluted at 1:200(4° overnight). 2, Tris-EDTA,pH9.0 was used for antigen retrieval. 3,Secondary antibody was diluted at 1:200(room temperature, 45min).