

## TIGD7 rabbit pAb

|                              |   |
|------------------------------|---|
| <b>Catalog No :</b>          | YT7495  |
| <b>Reactivity :</b>          | Human   |
| <b>Applications :</b>        | WB;IHC  |
| <b>Target :</b>              | TIGD7   |
| <b>Gene Name :</b>           | TIGD7   |
| <b>Protein Name :</b>        | TIGD7   |
| <b>Human Gene Id :</b>       | 91151   |
| <b>Human Swiss Prot No :</b> | Q6NT04  |
| <b>Immunogen :</b>           | Synthesized peptide derived from human TIGD7 AA range: 308-358  |
| <b>Specificity :</b>         | This antibody detects endogenous levels of TIGD7 at Human   |
| <b>Formulation :</b>         | Liquid in PBS containing 50% glycerol, 0.5% BSA and 0.02% sodium azide.   |
| <b>Source :</b>              | Polyclonal, Rabbit,IgG  |
| <b>Dilution :</b>            | WB 1:500-2000;IHC 1:50-300  |
| <b>Purification :</b>        | The antibody was affinity-purified from rabbit antiserum by affinity-chromatography using epitope-specific immunogen.   |
| <b>Concentration :</b>       | 1 mg/ml   |
| <b>Storage Stability :</b>   | -15°C to -25°C/1 year(Do not lower than -25°C)  |
| <b>Molecularweight :</b>     | 60kD  |
| <b>Background :</b>          | The protein encoded by this gene belongs to the tigger subfamily of the pogo superfamily of DNA-mediated transposons in humans. These proteins are related to DNA transposons found in fungi and nematodes, and more distantly to the Tc1 |

and mariner transposases. They are also very similar to the major mammalian centromere protein B. The exact function of this gene is not known. [provided by RefSeq, Jul 2008],

**Function :**

similarity:Belongs to the tigger transposable element derived protein family.,similarity:Contains 1 DDE domain.,similarity:Contains 1 HTH CENPB-type DNA-binding domain.,similarity:Contains 1 HTH psq-type DNA-binding domain.,tissue specificity:Expressed in all tissues tested. Higher expression in testis and ovary.,

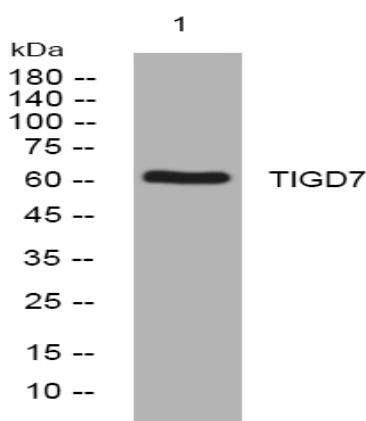
**Subcellular Location :**

Nucleus .

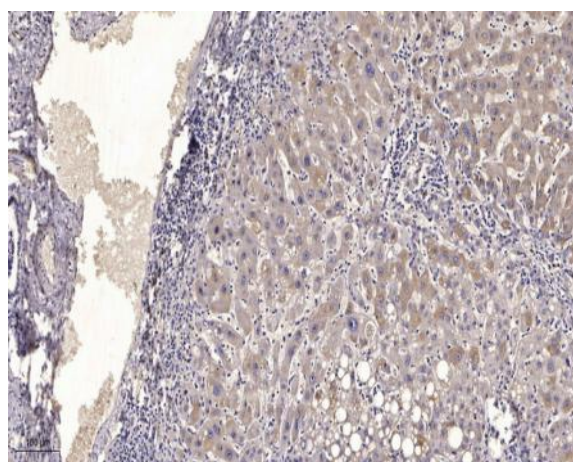
**Expression :**

Expressed in all tissues tested. Higher expression in testis and ovary.

## Products Images



Western blot analysis of lysates from HpeG2 cells, primary antibody was diluted at 1:1000, 4° over night



Immunohistochemical analysis of paraffin-embedded human liver cancer. 1, Antibody was diluted at 1:200(4° overnight). 2, Tris-EDTA,pH9.0 was used for antigen retrieval. 3,Secondary antibody was diluted at 1:200(room temperature, 45min).