

ARH40 rabbit pAb

Catalog No :	YT7493
Reactivity :	Human;Mouse
Applications :	WB
Target :	ARH40
Gene Name :	ARHGEF40 SOLO
Protein Name :	ARH40
Human Gene Id :	55701
Human Swiss Prot No :	Q8TER5
Mouse Gene Id :	268739
Mouse Swiss Prot No :	Q3UPH7
Immunogen :	Synthesized peptide derived from human ARH40 AA range: 1261-1311
Specificity :	This antibody detects endogenous levels of ARH40 at Human/Mouse
Formulation :	Liquid in PBS containing 50% glycerol, 0.5% BSA and 0.02% sodium azide.
Source :	Polyclonal, Rabbit,IgG
Dilution :	WB 1:500-2000
Purification :	The antibody was affinity-purified from rabbit antiserum by affinity-chromatography using epitope-specific immunogen.
Concentration :	1 mg/ml
Storage Stability :	-15°C to -25°C/1 year(Do not lower than -25°C)

Molecularweight : 167kD

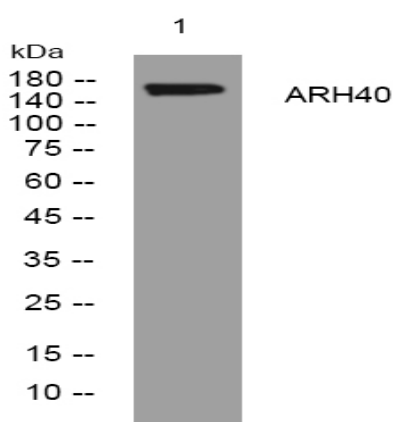
Background : This gene encodes a protein similar to guanosine nucleotide exchange factors for Rho GTPases. The encoded protein contains in its C-terminus a GEF domain involved in exchange activity and a pleckstrin homology domain. Alternatively spliced transcripts that encode different proteins have been described. [provided by RefSeq, Mar 2014],

Function : function:May act as a guanine nucleotide exchange factor (GEF).,similarity:Contains 1 DH (DBL-homology) domain.,similarity:Contains 1 PH domain.,subcellular location:Concentrated in the perinuclear region.,tissue specificity:Expressed at higher level in the central nervous system and skeletal muscle and greater abundance in fetal than adult brain (at protein level).,

Subcellular Location : Cytoplasm . Concentrated in the perinuclear region.

Expression : Expressed at higher level in the central nervous system and skeletal muscle and greater abundance in fetal than adult brain (at protein level).

Products Images



Western blot analysis of lysates from HpeG2 cells, primary antibody was diluted at 1:1000, 4° over night