

LR16A rabbit pAb

Catalog No :	YT7492
Reactivity :	Human;Mouse
Applications :	WB;IHC
Target :	LR16A
Gene Name :	LRRC16A CARMIL LRRC16
Protein Name :	LR16A
Human Gene Id :	55604
Human Swiss Prot No :	Q5VZK9
Mouse Gene Id :	68732
Mouse Swiss Prot No :	Q6EDY6
Immunogen :	Synthesized peptide derived from human LR16A AA range: 853-903
Specificity :	This antibody detects endogenous levels of LR16A at Human/Mouse
Formulation :	Liquid in PBS containing 50% glycerol, 0.5% BSA and 0.02% sodium azide.
Source :	Polyclonal, Rabbit,IgG
Dilution :	WB 1:500-2000;IHC 1:50-300
Purification :	The antibody was affinity-purified from rabbit antiserum by affinity-chromatography using epitope-specific immunogen.
Concentration :	1 mg/ml
Storage Stability :	-15°C to -25°C/1 year(Do not lower than -25°C)

Molecularweight : 151kD**Function :**

function: Binds CAPZA2 with high affinity and significantly decreases CAPZA2 affinity for actin barbed ends. Increases the rate of elongation from seeds in the presence of CAPZA2, however, seems unable to nucleate filaments. Rapidly uncaps barbed ends capped by CAPZA2 and enhances barbed-end actin polymerization.,similarity: Belongs to the CARMIL family.,similarity: Contains 11 LRR (leucine-rich) repeats.,subcellular location: Colocalized with F-actin in lamellipodia but not with F-actin in stress fibers.,subunit: Interacts via its C-terminus with CAPZA2 in cytoplasm; interaction is essential for lamellipodial protrusion and cell translocation.,tissue specificity: Expressed in lung, placenta, small intestine, liver, thymus, colon, skeletal muscle, heart and brain. Higher expression in kidney.,

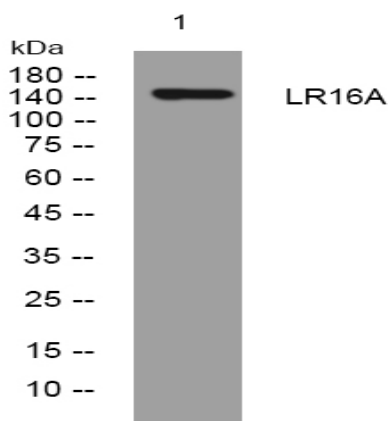
Subcellular Location :

Cytoplasm . Cytoplasm, cytoskeleton . Cell membrane . Cell projection, lamellipodium . Found on macropinosomes (PubMed:19846667). Colocalized with heterodimeric capping protein (CP) and F-actin in lamellipodia but not with F-actin in stress fibers (PubMed:19846667). .

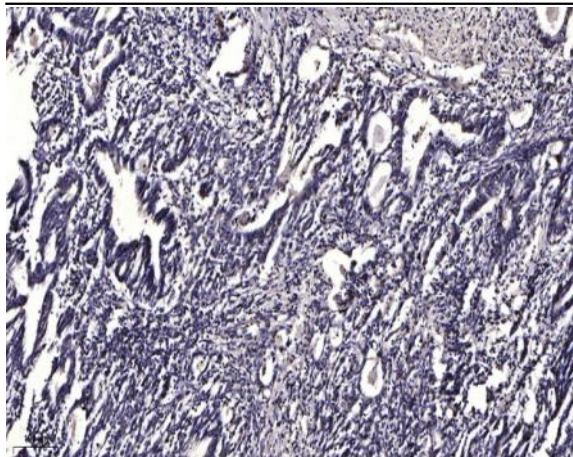
Expression :

Expressed in lung, placenta, small intestine, liver, thymus, colon, skeletal muscle, heart and brain. Higher expression in kidney.

Products Images



Western blot analysis of lysates from U2OS cells, primary antibody was diluted at 1:1000, 4° over night



Immunohistochemical analysis of paraffin-embedded human Gastric adenocarcinoma. 1, Antibody was diluted at 1:200(4° overnight). 2, Tris-EDTA,pH9.0 was used for antigen retrieval. 3,Secondary antibody was diluted at 1:200(room temperature, 45min).