

## FBXW2 rabbit pAb

<b>Catalog No :</b>	YT7491
<b>Reactivity :</b>	Human;Mouse;Rat
<b>Applications :</b>	WB
<b>Target :</b>	FBXW2
<b>Gene Name :</b>	FBXW2 FBW2 FWD2
<b>Protein Name :</b>	FBXW2
<b>Human Gene Id :</b>	26190
<b>Human Swiss Prot No :</b>	Q9UKT8
<b>Mouse Swiss Prot No :</b>	Q60584
<b>Rat Gene Id :</b>	311881
<b>Rat Swiss Prot No :</b>	B2RZ17
<b>Immunogen :</b>	Synthesized peptide derived from human FBXW2 AA range: 155-205
<b>Specificity :</b>	This antibody detects endogenous levels of FBXW2 at Human/Mouse/Rat
<b>Formulation :</b>	Liquid in PBS containing 50% glycerol, 0.5% BSA and 0.02% sodium azide.
<b>Source :</b>	Polyclonal, Rabbit,IgG
<b>Dilution :</b>	WB 1:500-2000
<b>Purification :</b>	The antibody was affinity-purified from rabbit antiserum by affinity-chromatography using epitope-specific immunogen.
<b>Concentration :</b>	1 mg/ml

**Storage Stability :** -15°C to -25°C/1 year(Do not lower than -25°C)

**Molecularweight :** 50kD

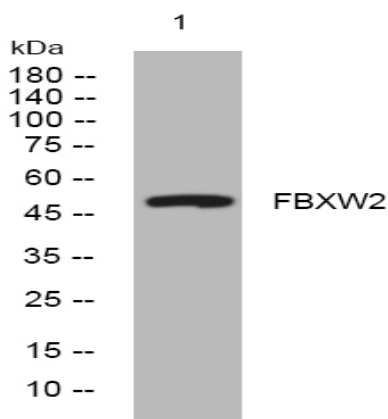
**Background :**

F-box proteins are an expanding family of eukaryotic proteins characterized by an approximately 40 amino acid motif, the F box. Some F-box proteins have been shown to be critical for the ubiquitin-mediated degradation of cellular regulatory proteins. In fact, F-box proteins are one of the four subunits of ubiquitin protein ligases, called SCFs. SCF ligases bring ubiquitin conjugating enzymes to substrates that are specifically recruited by the different F-box proteins. Mammalian F-box proteins are classified into three groups based on the presence of either WD-40 repeats, leucine-rich repeats, or the presence or absence of other protein-protein interacting domains. This gene encodes the second identified member of the F-box gene family and contains multiple WD-40 repeats. [provided by RefSeq, Jul 2008],

**Function :**

function:Substrate-recognition component of the SCF (SKP1-CUL1-F-box protein)-type E3 ubiquitin ligase complex.,similarity:Contains 1 F-box domain.,similarity:Contains 4 WD repeats.,subunit:Directly interacts with SKP1A and CUL1.,

## Products Images



Western blot analysis of lysates from HCT116 cells, primary antibody was diluted at 1:1000, 4° over night