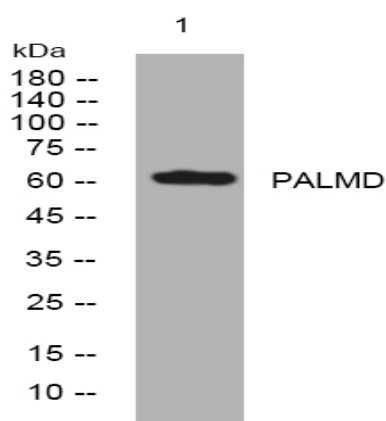


PALMD rabbit pAb

Catalog No :	YT7484
Reactivity :	Human;Mouse;Rat
Applications :	WB
Target :	PALMD
Gene Name :	PALMD C1orf11 PALML
Protein Name :	PALMD
Human Gene Id :	54873
Human Swiss Prot No :	Q9NP74
Mouse Gene Id :	114301
Mouse Swiss Prot No :	Q9JHU2
Rat Gene Id :	310811
Rat Swiss Prot No :	Q4KM62
Immunogen :	Synthesized peptide derived from human PALMD AA range: 4-54
Specificity :	This antibody detects endogenous levels of PALMD at Human/Mouse/Rat
Formulation :	Liquid in PBS containing 50% glycerol, 0.5% BSA and 0.02% sodium azide.
Source :	Polyclonal, Rabbit,IgG
Dilution :	WB 1:500-2000
Purification :	The antibody was affinity-purified from rabbit antiserum by affinity-chromatography using epitope-specific immunogen.

Concentration :	<u>1 mg/ml</u>
Storage Stability :	<u>-15°C to -25°C/1 year(Do not lower than -25°C)</u>
Molecularweight :	<u>61kD</u>
Function :	<u>sequence caution:Contaminating sequence. Potential poly-A sequence.,similarity:Belongs to the paralemmin family.,tissue specificity:Ubiquitous. Most abundant in cardiac and skeletal muscle.,</u>
Subcellular Location :	<u>Cytoplasm . Cell projection, dendrite . Cell projection, dendritic spine .</u>
Expression :	<u>Ubiquitous. Most abundant in cardiac and skeletal muscle.</u>

Products Images



Western blot analysis of lysates from CACO2 cells, primary antibody was diluted at 1:1000, 4° over night