

## IGS10 rabbit pAb

<b>Catalog No :</b>	YT7488
<b>Reactivity :</b>	Human;Mouse;Rat
<b>Applications :</b>	IHC;IF
<b>Target :</b>	IGS10
<b>Gene Name :</b>	IGSF10 CMF608
<b>Protein Name :</b>	IGS10
<b>Human Gene Id :</b>	285313
<b>Human Swiss Prot No :</b>	Q6WRI0
<b>Mouse Gene Id :</b>	242050
<b>Mouse Swiss Prot No :</b>	Q3V1M1
<b>Rat Gene Id :</b>	310448
<b>Rat Swiss Prot No :</b>	Q6WRH9
<b>Immunogen :</b>	Synthesized peptide derived from human IGS10 AA range: 1790-1840
<b>Specificity :</b>	This antibody detects endogenous levels of IGS10 at Human/Mouse/Rat
<b>Formulation :</b>	Liquid in PBS containing 50% glycerol, 0.5% BSA and 0.02% sodium azide.
<b>Source :</b>	Polyclonal, Rabbit,IgG
<b>Dilution :</b>	IHC 1:50-200. IF 1:50-200
<b>Purification :</b>	The antibody was affinity-purified from rabbit antiserum by affinity-chromatography using epitope-specific immunogen.

**Concentration :** 1 mg/ml

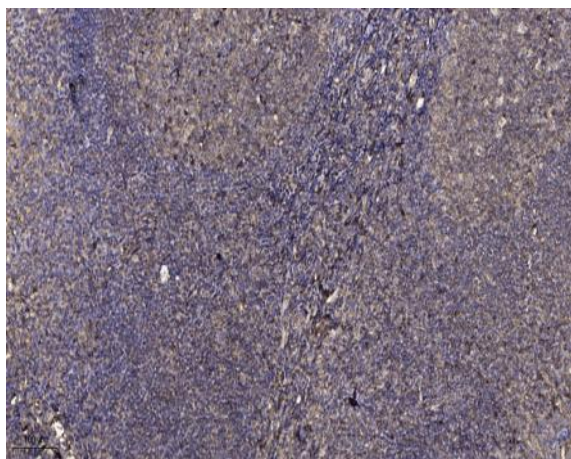
**Storage Stability :** -15°C to -25°C/1 year(Do not lower than -25°C)

**Molecularweight :** 289kD

**Function :** function:May be involved in the maintenance of osteochondroprogenitor cells pool.,similarity:Contains 1 LRRNT domain.,similarity:Contains 12 Ig-like C2-type (immunoglobulin-like) domains.,similarity:Contains 13 LRR (leucine-rich) repeats.,

**Subcellular Location :** Secreted .

## Products Images



Immunohistochemical analysis of paraffin-embedded human tonsil. 1, Antibody was diluted at 1:200(4° overnight). 2, Tris-EDTA,pH9.0 was used for antigen retrieval. 3,Secondary antibody was diluted at 1:200(room temperature, 30min).