

## ERLN1 rabbit pAb

<b>Catalog No :</b>	YT7470
<b>Reactivity :</b>	Human;Mouse
<b>Applications :</b>	WB
<b>Target :</b>	ERLN1
<b>Gene Name :</b>	ERLIN1 C10orf69 KE04 KEO4 SPFH1
<b>Protein Name :</b>	ERLN1
<b>Human Gene Id :</b>	10613
<b>Human Swiss Prot No :</b>	O75477
<b>Mouse Gene Id :</b>	226144
<b>Mouse Swiss Prot No :</b>	Q91X78
<b>Immunogen :</b>	Synthesized peptide derived from human ERLN1 AA range: 185-235
<b>Specificity :</b>	This antibody detects endogenous levels of ERLN1 at Human/Mouse
<b>Formulation :</b>	Liquid in PBS containing 50% glycerol, 0.5% BSA and 0.02% sodium azide.
<b>Source :</b>	Polyclonal, Rabbit,IgG
<b>Dilution :</b>	WB 1:500-2000
<b>Purification :</b>	The antibody was affinity-purified from rabbit antiserum by affinity-chromatography using epitope-specific immunogen.
<b>Concentration :</b>	1 mg/ml
<b>Storage Stability :</b>	-15°C to -25°C/1 year(Do not lower than -25°C)

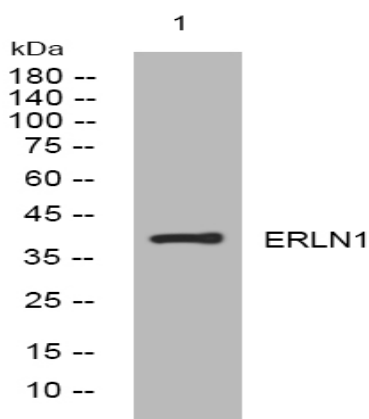
**Molecularweight :** 38kD

**Function :** similarity:Belongs to the band 7/mec-2 family.,subcellular location:Associated with lipid raft-like domains of the endoplasmic reticulum membrane.,tissue specificity:Expressed in heart, placenta, liver, kidney, pancreas, prostate, testis, ovary and small intestine.,

**Subcellular Location :** Endoplasmic reticulum membrane ; Single-pass type II membrane protein . Associated with lipid raft-like domains of the endoplasmic reticulum membrane.

**Expression :** Expressed in heart, placenta, liver, kidney, pancreas, prostate, testis, ovary and small intestine.

## Products Images



Western blot analysis of lysates from U2OS cells, primary antibody was diluted at 1:1000, 4° over night