

OR1Q1 rabbit pAb

Catalog No :	YT7432
Reactivity :	Human
Applications :	WB
Target :	OR1Q1
Fields :	>>Olfactory transduction
Gene Name :	OR1Q1 OR1Q2 OR1Q3
Protein Name :	OR1Q1
Human Gene Id :	158131
Human Swiss Prot No :	Q15612
Immunogen :	Synthesized peptide derived from human OR1Q1 AA range: 260-310
Specificity :	This antibody detects endogenous levels of OR1Q1 at Human
Formulation :	Liquid in PBS containing 50% glycerol, 0.5% BSA and 0.02% sodium azide.
Source :	Polyclonal, Rabbit,IgG
Dilution :	WB 1:500-2000
Purification :	The antibody was affinity-purified from rabbit antiserum by affinity-chromatography using epitope-specific immunogen.
Concentration :	1 mg/ml
Storage Stability :	-15°C to -25°C/1 year(Do not lower than -25°C)
Molecularweight :	35kD

Background :

Olfactory receptors interact with odorant molecules in the nose, to initiate a neuronal response that triggers the perception of a smell. The olfactory receptor proteins are members of a large family of G-protein-coupled receptors (GPCR) arising from single coding-exon genes. Olfactory receptors share a 7-transmembrane domain structure with many neurotransmitter and hormone receptors and are responsible for the recognition and G protein-mediated transduction of odorant signals. The olfactory receptor gene family is the largest in the genome. The nomenclature assigned to the olfactory receptor genes and proteins for this organism is independent of other organisms. [provided by RefSeq, Jul 2008],

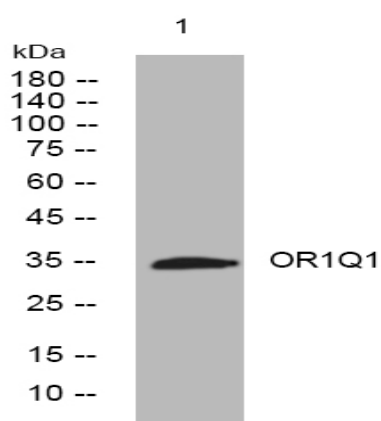
Function :

function:Odorant receptor .,similarity:Belongs to the G-protein coupled receptor 1 family.,

Subcellular Location :

Cell membrane; Multi-pass membrane protein.

Products Images



Western blot analysis of lysates from HeLa cells, primary antibody was diluted at 1:1000, 4° over night