

## ZN500 rabbit pAb

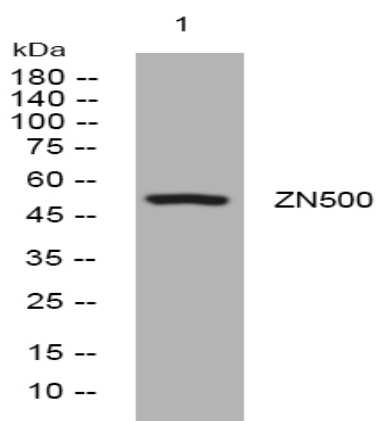
<b>Catalog No :</b>	YT7429
<b>Reactivity :</b>	Human
<b>Applications :</b>	WB
<b>Target :</b>	ZN500
<b>Gene Name :</b>	ZNF500 KIAA0557 ZKSCAN18
<b>Protein Name :</b>	ZN500
<b>Human Gene Id :</b>	26048
<b>Human Swiss Prot No :</b>	O60304
<b>Immunogen :</b>	Synthesized peptide derived from human ZN500 AA range: 407-457
<b>Specificity :</b>	This antibody detects endogenous levels of ZN500 at Human
<b>Formulation :</b>	Liquid in PBS containing 50% glycerol, 0.5% BSA and 0.02% sodium azide.
<b>Source :</b>	Polyclonal, Rabbit,IgG
<b>Dilution :</b>	WB 1:500-2000
<b>Purification :</b>	The antibody was affinity-purified from rabbit antiserum by affinity-chromatography using epitope-specific immunogen.
<b>Concentration :</b>	1 mg/ml
<b>Storage Stability :</b>	-15°C to -25°C/1 year(Do not lower than -25°C)
<b>Molecularweight :</b>	53kD
<b>Function :</b>	function:May be involved in transcriptional regulation.,similarity:Belongs to the krueppel C2H2-type zinc-finger protein family.,similarity:Contains 1 KRAB domain.,similarity:Contains 1 SCAN box domain.,similarity:Contains 5 C2H2-type

zinc fingers.,

---

**Subcellular  
Location :**Nucleus .

---

**Products Images**

Western blot analysis of lysates from MCF-7 cells, primary antibody was diluted at 1:1000, 4° over night