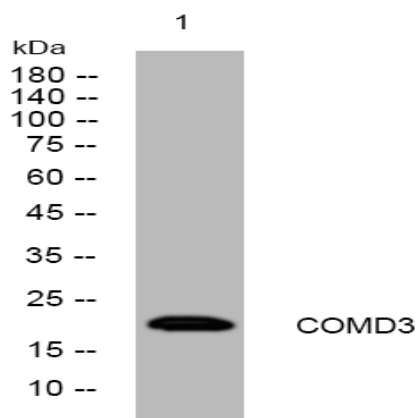


COMD3 rabbit pAb

Catalog No :	YT7428
Reactivity :	Human;Mouse;Rat
Applications :	WB
Target :	COMD3
Gene Name :	COMMD3 BUP C10orf8
Protein Name :	COMD3
Human Gene Id :	23412
Human Swiss Prot No :	Q9UBI1
Mouse Gene Id :	12238
Mouse Swiss Prot No :	Q63829
Rat Gene Id :	291339
Rat Swiss Prot No :	Q6P9U3
Immunogen :	Synthesized peptide derived from human COMD3 AA range: 24-74
Specificity :	This antibody detects endogenous levels of COMD3 at Human/Mouse/Rat
Formulation :	Liquid in PBS containing 50% glycerol, 0.5% BSA and 0.02% sodium azide.
Source :	Polyclonal, Rabbit,IgG
Dilution :	WB 1:500-2000
Purification :	The antibody was affinity-purified from rabbit antiserum by affinity-chromatography using epitope-specific immunogen.

Concentration :	<u>1 mg/ml</u>
Storage Stability :	<u>-15°C to -25°C/1 year(Do not lower than -25°C)</u>
Molecularweight :	<u>21kD</u>
Function :	<u>similarity:Contains 1 COMM domain.,tissue specificity:Widely expressed with highest expression in thymus.,</u>
Subcellular Location :	<u>Cytoplasm . Nucleus .</u>
Expression :	<u>Widely expressed with highest expression in thymus.</u>

Products Images



Western blot analysis of lysates from MCF-7 cells, primary antibody was diluted at 1:1000, 4° over night