

## LMOD2 rabbit pAb

<b>Catalog No :</b>	YT7425
<b>Reactivity :</b>	Human;Mouse;Rat
<b>Applications :</b>	WB;ELISA;IHC
<b>Target :</b>	LMOD2
<b>Gene Name :</b>	LMOD2
<b>Protein Name :</b>	LMOD2
<b>Human Gene Id :</b>	442721
<b>Human Swiss Prot No :</b>	Q6P5Q4
<b>Mouse Gene Id :</b>	93677
<b>Mouse Swiss Prot No :</b>	Q3UHZ5
<b>Rat Gene Id :</b>	296935
<b>Rat Swiss Prot No :</b>	A1A5Q0
<b>Immunogen :</b>	Synthesized peptide derived from human LMOD2 AA range: 279-329
<b>Specificity :</b>	This antibody detects endogenous levels of LMOD2 at Human/Mouse/Rat
<b>Formulation :</b>	Liquid in PBS containing 50% glycerol, 0.5% BSA and 0.02% sodium azide.
<b>Source :</b>	Polyclonal, Rabbit,IgG
<b>Dilution :</b>	WB 1:500-2000;IHC 1:50-300; ELISA 2000-20000
<b>Purification :</b>	The antibody was affinity-purified from rabbit antiserum by affinity-chromatography using epitope-specific immunogen.

**Concentration :** 1 mg/ml

**Storage Stability :** -15°C to -25°C/1 year(Do not lower than -25°C)

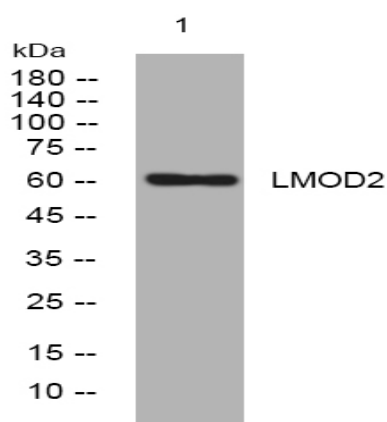
**Molecularweight :** 60kD

**Function :** function:May block the elongation and depolymerization of the actin filaments at the pointed end.,sequence caution:Translation N-terminally shortened.,similarity:Belongs to the tropomodulin family.,similarity:Contains 1 WH2 domain.,subunit:Able to bind to tropomyosin.,tissue specificity:Specifically expressed in heart and skeletal muscles. Not expressed in other tissues.,

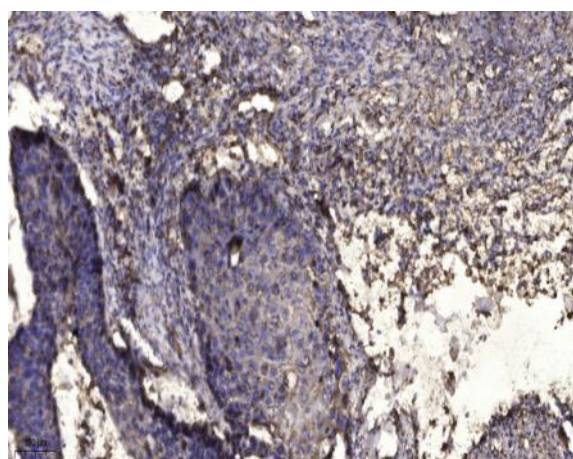
**Subcellular Location :** Cytoplasm, myofibril, sarcomere . Cytoplasm, myofibril . Cytoplasm, myofibril, sarcomere, M line . Cytoplasm, cytoskeleton . Colocalizes with actin filaments in sarcomeres. Detected close to the M line. .

**Expression :** Specifically expressed in heart and skeletal muscles, with higher levels in heart (at protein level). Not expressed in other tissues.

## Products Images



Western blot analysis of lysates from DU145 cells, primary antibody was diluted at 1:1000, 4° over night



Immunohistochemical analysis of paraffin-embedded human Squamous cell carcinoma of lung. 1, Antibody was diluted at 1:200(4° overnight). 2, Tris-EDTA,pH9.0 was used for antigen retrieval. 3,Secondary antibody was diluted at 1:200(room temperature, 45min).