

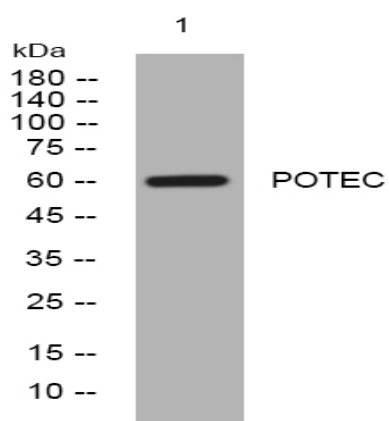
POTEC rabbit pAb

Catalog No :	YT7417
Reactivity :	Human
Applications :	WB
Target :	POTEC
Gene Name :	POTEC A26B2 POTE18
Protein Name :	POTEC
Human Gene Id :	388468
Human Swiss Prot No :	B2RU33
Immunogen :	Synthesized peptide derived from human POTEC AA range: 265-315
Specificity :	This antibody detects endogenous levels of POTEC at Human
Formulation :	Liquid in PBS containing 50% glycerol, 0.5% BSA and 0.02% sodium azide.
Source :	Polyclonal, Rabbit,IgG
Dilution :	WB 1:500-2000
Purification :	The antibody was affinity-purified from rabbit antiserum by affinity-chromatography using epitope-specific immunogen.
Concentration :	1 mg/ml
Storage Stability :	-15°C to -25°C/1 year(Do not lower than -25°C)
Molecularweight :	60kD
Function :	similarity:Belongs to the POTE family.,similarity:Contains 6 ANK repeats.,similarity:Contains 7 ANK repeats.,tissue specificity:Expressed in prostate and testis.,tissue specificity:Expressed in prostate, ovary, testis, placenta

and prostate cancer cell lines. Localizes to basal and terminal prostate epithelial cells.

Expression : Expressed in prostate and testis.

Products Images



Western blot analysis of lysates from HeLa cells, primary antibody was diluted at 1:1000, 4° over night