

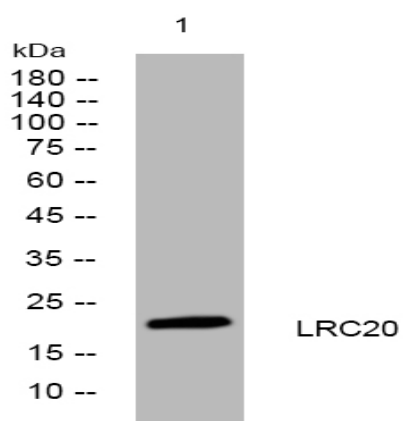
LRC20 rabbit pAb

Catalog No :	YT7410
Reactivity :	Human;Mouse
Applications :	WB
Target :	LRC20
Gene Name :	LRR20 UNQ2429/PRO4989
Protein Name :	LRC20
Human Gene Id :	55222
Human Swiss Prot No :	Q8TCA0
Mouse Gene Id :	216011
Mouse Swiss Prot No :	Q8CI70
Immunogen :	Synthesized peptide derived from human LRC20 AA range: 6-56
Specificity :	This antibody detects endogenous levels of LRC20 at Human/Mouse
Formulation :	Liquid in PBS containing 50% glycerol, 0.5% BSA and 0.02% sodium azide.
Source :	Polyclonal, Rabbit,IgG
Dilution :	WB 1:500-2000
Purification :	The antibody was affinity-purified from rabbit antiserum by affinity-chromatography using epitope-specific immunogen.
Concentration :	1 mg/ml
Storage Stability :	-15°C to -25°C/1 year(Do not lower than -25°C)

Molecularweight : 20kD

Function : sequence caution:Translated as stop.,similarity:Contains 6 LRR (leucine-rich) repeats.,

Products Images



Western blot analysis of lysates from U2OS cells, primary antibody was diluted at 1:1000, 4° over night