

RECQ5 rabbit pAb

| | |
|------------------------------|---|
| Catalog No : | YT7406 |
| Reactivity : | Human;Rat;Mouse; |
| Applications : | WB;ELISA;IHC |
| Target : | RECQ5 |
| Gene Name : | RECQL5 RECQ5 |
| Protein Name : | RECQ5 |
| Human Gene Id : | 9400 |
| Human Swiss Prot No : | O94762 |
| Immunogen : | Synthesized peptide derived from human RECQ5 AA range: 647-697 |
| Specificity : | This antibody detects endogenous levels of RECQ5 at Human |
| Formulation : | Liquid in PBS containing 50% glycerol, 0.5% BSA and 0.02% sodium azide. |
| Source : | Polyclonal, Rabbit,IgG |
| Dilution : | WB 1:500-2000;IHC 1:50-300; ELISA 2000-20000 |
| Purification : | The antibody was affinity-purified from rabbit antiserum by affinity-chromatography using epitope-specific immunogen. |
| Concentration : | 1 mg/ml |
| Storage Stability : | -15°C to -25°C/1 year(Do not lower than -25°C) |
| Molecularweight : | 109kD |
| Background : | The protein encoded by this gene is a helicase that is important for genome stability. The encoded protein also prevents aberrant homologous recombination by displacing RAD51 from ssDNA. Three transcript variants encoding different |

isoforms have been found for this gene. [provided by RefSeq, Jul 2011],

Function :

function:May have an important role in DNA metabolism.,similarity:Belongs to the helicase family. RecQ subfamily.,similarity:Contains 1 helicase ATP-binding domain.,similarity:Contains 1 helicase C-terminal domain.,subunit:Interacts with TOP3A and TOP3B.,tissue specificity:Ubiquitous.,

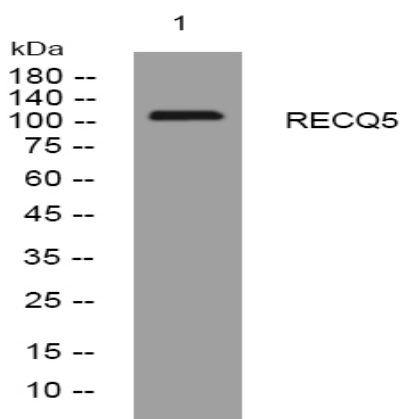
Subcellular Location :

[Isoform Beta]: Nucleus, nucleoplasm . Nucleus . Recruited to sites of DNA damage, such as single-strand breaks and inter-strand cross-links, and at stalled replication forks. Re-localizes from the nucleolus into the nucleus after replicative stress and significantly associates with WRN during S-phase (PubMed:23180761). .; [Isoform Alpha]: Cytoplasm .; [Isoform Gamma]: Cytoplasm .

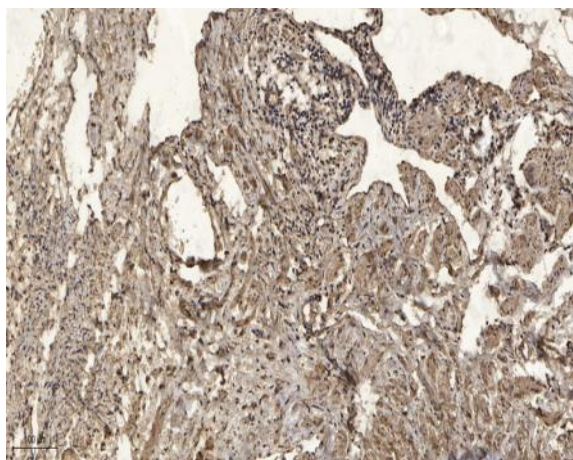
Expression :

Ubiquitous.

Products Images



Western blot analysis of lysates from U2OS cells, primary antibody was diluted at 1:1000, 4° over night



Immunohistochemical analysis of paraffin-embedded human oophoroma. 1, Antibody was diluted at 1:200(4° overnight). 2, Tris-EDTA,pH9.0 was used for antigen retrieval. 3,Secondary antibody was diluted at 1:200(room temperature, 45min).