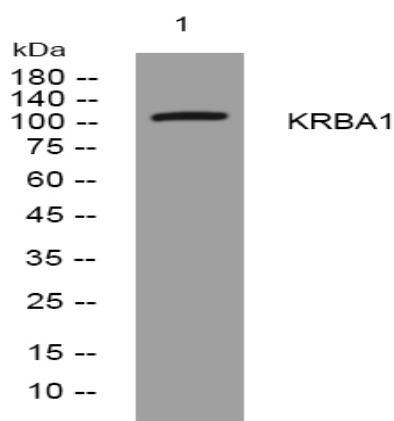


KRBA1 rabbit pAb

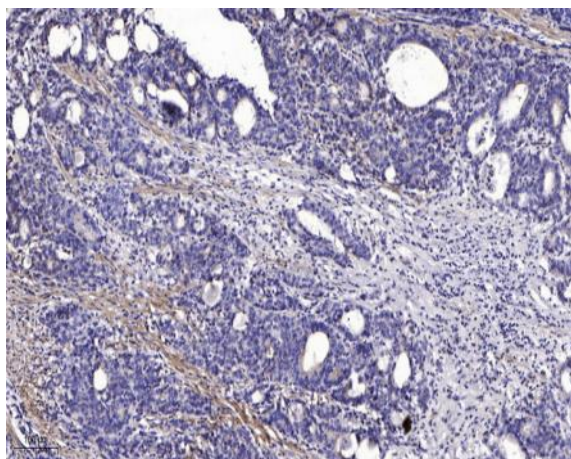
Catalog No :	YT7393
Reactivity :	Human;Mouse
Applications :	WB;ELISA;IHC
Target :	KRBA1
Gene Name :	KRBA1 KIAA1862
Protein Name :	KRBA1
Human Gene Id :	84626
Human Swiss Prot No :	A5PL33
Mouse Gene Id :	77827
Mouse Swiss Prot No :	Q6NXZ1
Immunogen :	Synthesized peptide derived from human KRBA1 AA range: 738-788
Specificity :	This antibody detects endogenous levels of KRBA1 at Human/Mouse
Formulation :	Liquid in PBS containing 50% glycerol, 0.5% BSA and 0.02% sodium azide.
Source :	Polyclonal, Rabbit,IgG
Dilution :	WB 1:500-2000;IHC 1:50-300; ELISA 2000-20000
Purification :	The antibody was affinity-purified from rabbit antiserum by affinity-chromatography using epitope-specific immunogen.
Concentration :	1 mg/ml
Storage Stability :	-15°C to -25°C/1 year(Do not lower than -25°C)

Molecularweight : 113kD**Function :** tissue specificity:Expressed in brain (cerebellum).,**Subcellular Location :** intracellular,**Expression :** Expressed in brain (cerebellum).

Products Images



Western blot analysis of lysates from HEK293 cells, primary antibody was diluted at 1:1000, 4° over night



Immunohistochemical analysis of paraffin-embedded human Gastric adenocarcinoma. 1, Antibody was diluted at 1:200(4° overnight). 2, Tris-EDTA,pH9.0 was used for antigen retrieval. 3,Secondary antibody was diluted at 1:200(room temperature, 45min).