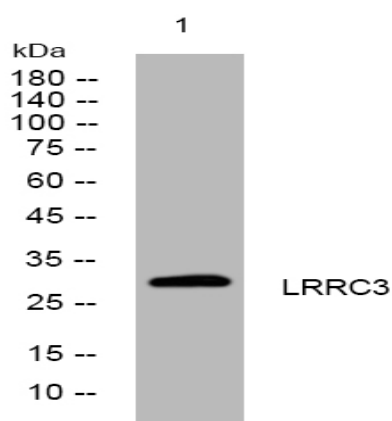


LRRC3 rabbit pAb

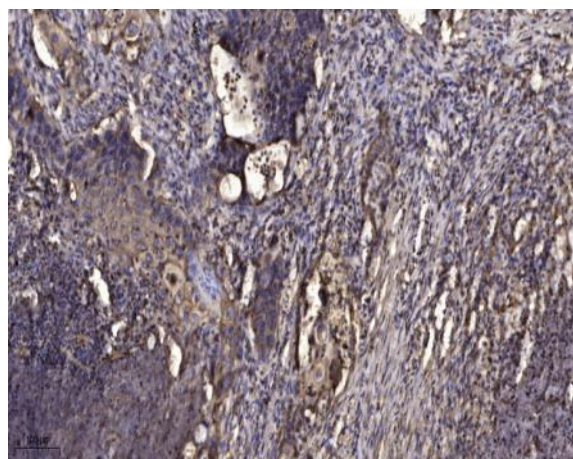
Catalog No :	YT7392
Reactivity :	Human;Mouse;Rat
Applications :	WB;IHC
Target :	LRRC3
Gene Name :	LRRC3 C21orf102 LRRC3A UNQ9233/PRO31982
Protein Name :	LRRC3
Human Gene Id :	81543
Human Swiss Prot No :	Q9BY71
Mouse Gene Id :	237387
Mouse Swiss Prot No :	P59034
Rat Gene Id :	246773
Rat Swiss Prot No :	P59035
Immunogen :	Synthesized peptide derived from human LRRC3 AA range: 110-160
Specificity :	This antibody detects endogenous levels of LRRC3 at Human/Mouse/Rat
Formulation :	Liquid in PBS containing 50% glycerol, 0.5% BSA and 0.02% sodium azide.
Source :	Polyclonal, Rabbit,IgG
Dilution :	WB 1:500-2000;IHC 1:50-300
Purification :	The antibody was affinity-purified from rabbit antiserum by affinity-chromatography using epitope-specific immunogen.

Concentration :	1 mg/ml
Storage Stability :	-15°C to -25°C/1 year(Do not lower than -25°C)
Molecularweight :	28kD
Function :	similarity:Belongs to the LRRC3 family.,similarity:Contains 3 LRR (leucine-rich) repeats.,tissue specificity:Widely expressed; detected in testis, lung, small intestine, breast, brain, heart, bone marrow, placenta, colon, fetal brain, liver, fetal liver, thymus, salivary gland, spinal cord, spleen, trachea and adrenal gland.,
Subcellular Location :	Membrane ; Single-pass membrane protein .
Expression :	Widely expressed; detected in testis, lung, small intestine, breast, brain, heart, bone marrow, placenta, colon, fetal brain, liver, fetal liver, thymus, salivary gland, spinal cord, spleen, trachea and adrenal gland.

Products Images



Western blot analysis of lysates from SH-SY5Y cells, primary antibody was diluted at 1:1000, 4° over night



Immunohistochemical analysis of paraffin-embedded human Squamous cell carcinoma of lung. 1, Antibody was diluted at 1:200(4° overnight). 2, Tris-EDTA,pH9.0 was used for antigen retrieval. 3,Secondary antibody was diluted at 1:200(room temperature, 45min).