

FKB15 rabbit pAb

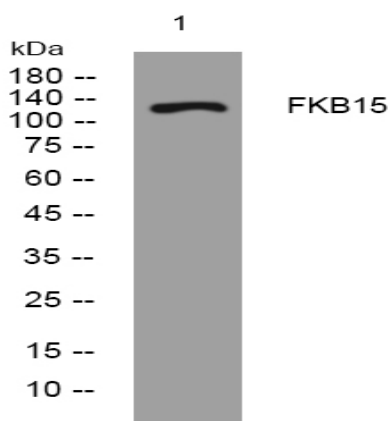
Catalog No :	YT7390
Reactivity :	Human;Mouse
Applications :	WB
Target :	FKB15
Gene Name :	FKBP15 KIAA0674
Protein Name :	FKB15
Human Gene Id :	23307
Human Swiss Prot No :	Q5T1M5
Mouse Gene Id :	338355
Mouse Swiss Prot No :	Q6P9Q6
Immunogen :	Synthesized peptide derived from human FKB15 AA range: 847-897
Specificity :	This antibody detects endogenous levels of FKB15 at Human/Mouse
Formulation :	Liquid in PBS containing 50% glycerol, 0.5% BSA and 0.02% sodium azide.
Source :	Polyclonal, Rabbit,IgG
Dilution :	WB 1:500-2000
Purification :	The antibody was affinity-purified from rabbit antiserum by affinity-chromatography using epitope-specific immunogen.
Concentration :	1 mg/ml
Storage Stability :	-15°C to -25°C/1 year(Do not lower than -25°C)

Molecularweight : 134kD

Function : domain:The PPIase FKBP-type domain seems to be inactive both for FK506-binding and enzymatic activity.,function:May be involved in the cytoskeletal organization of neuronal growth cones. Seems to be inactive as a PPIase.,similarity:Belongs to the FKBP-type PPIase family.,similarity:Contains 1 PPIase FKBP-type domain.,subcellular location:Present in axons and neuronal growth cones.,

Subcellular Location : Cytoplasm . Cell projection, axon . Early endosome . Present in axons and neuronal growth cones. .

Products Images



Western blot analysis of lysates from K562 cells, primary antibody was diluted at 1:1000, 4° over night