

PRI2 rabbit pAb

Catalog No :	YT7388
Reactivity :	Human;Mouse;Rat
Applications :	WB;IHC
Target :	PRI2
Fields :	>>DNA replication
Gene Name :	PRIM2 PRIM2A
Protein Name :	PRI2
Human Gene Id :	5558
Human Swiss Prot No :	P49643
Mouse Gene Id :	19076
Mouse Swiss Prot No :	P33610
Rat Swiss Prot No :	O89044
Immunogen :	Synthesized peptide derived from human PRI2 AA range: 369-419
Specificity :	This antibody detects endogenous levels of PRI2 at Human/Mouse/Rat
Formulation :	Liquid in PBS containing 50% glycerol, 0.5% BSA and 0.02% sodium azide.
Source :	Polyclonal, Rabbit,IgG
Dilution :	WB 1:500-2000;IHC 1:50-300
Purification :	The antibody was affinity-purified from rabbit antiserum by affinity-chromatography using epitope-specific immunogen.

Concentration : 1 mg/ml

Storage Stability : -15°C to -25°C/1 year(Do not lower than -25°C)

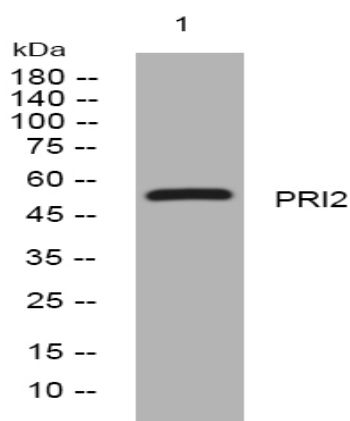
Molecularweight : 56kD

Background : This gene encodes the 58 kilodalton subunit of DNA primase, an enzyme that plays a key role in the replication of DNA. The encoded protein forms a heterodimer with a 49 kilodalton subunit. This heterodimer functions as a DNA-directed RNA polymerase to synthesize small RNA primers that are used to create Okazaki fragments on the lagging strand of the DNA. Alternative splicing of this gene results in multiple transcript variants. This gene has a related pseudogene, which is also present on chromosome 6. [provided by RefSeq, Apr 2014],

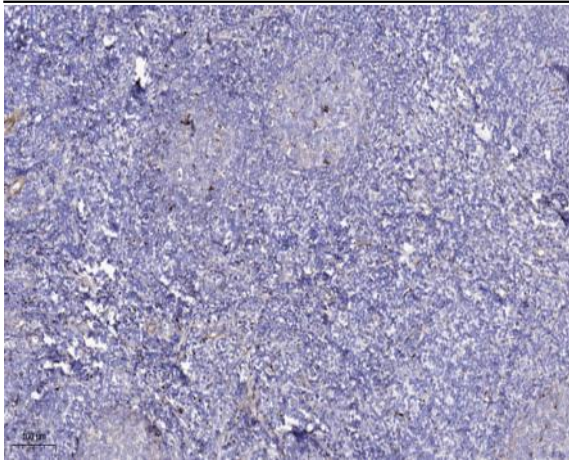
Function : function:DNA primase is the polymerase that synthesizes small RNA primers for the Okazaki fragments made during discontinuous DNA replication.,similarity:Belongs to the eukaryotic-type primase large subunit family.,subunit:Heterodimer of a small subunit and a large subunit.,

Subcellular Location : nucleoplasm,alpha DNA polymerase:primase complex,primosome complex,

Products Images



Western blot analysis of lysates from THP-1 cells, primary antibody was diluted at 1:1000, 4° over night



Immunohistochemical analysis of paraffin-embedded human tonsil. 1, Antibody was diluted at 1:200(4° overnight). 2, Tris-EDTA,pH9.0 was used for antigen retrieval. 3,Secondary antibody was diluted at 1:200(room temperature, 45min).