

## TRI47 rabbit pAb

<b>Catalog No :</b>	YT7382
<b>Reactivity :</b>	Human;Mouse
<b>Applications :</b>	WB
<b>Target :</b>	TRI47
<b>Gene Name :</b>	TRIM47 GOA RNF100
<b>Protein Name :</b>	TRI47
<b>Human Gene Id :</b>	91107
<b>Human Swiss Prot No :</b>	Q96LD4
<b>Mouse Gene Id :</b>	217333
<b>Mouse Swiss Prot No :</b>	Q8C0E3
<b>Immunogen :</b>	Synthesized peptide derived from human TRI47 AA range: 199-249
<b>Specificity :</b>	This antibody detects endogenous levels of TRI47 at Human/Mouse
<b>Formulation :</b>	Liquid in PBS containing 50% glycerol, 0.5% BSA and 0.02% sodium azide.
<b>Source :</b>	Polyclonal, Rabbit,IgG
<b>Dilution :</b>	WB 1:500-2000
<b>Purification :</b>	The antibody was affinity-purified from rabbit antiserum by affinity-chromatography using epitope-specific immunogen.
<b>Concentration :</b>	1 mg/ml
<b>Storage Stability :</b>	-15°C to -25°C/1 year(Do not lower than -25°C)

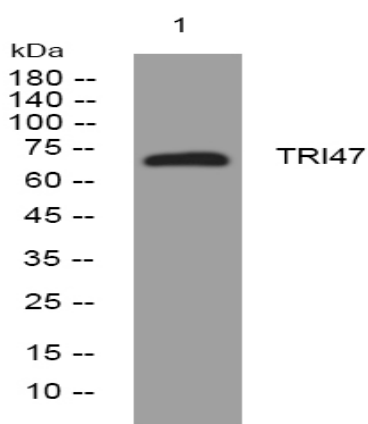
**Molecularweight :** 70kD

**Function :** similarity:Belongs to the TRIM/RBCC family.,similarity:Contains 1 B box-type zinc finger.,similarity:Contains 1 B30.2/SPRY domain.,similarity:Contains 1 RING-type zinc finger.,tissue specificity:Low expression in most tissues. Higher expression in kidney tubular cells. Overexpressed in astrocytoma tumor cells.,

**Subcellular Location :** Cytoplasm . Nucleus .

**Expression :** Low expression in most tissues. Higher expression in kidney tubular cells. Overexpressed in astrocytoma tumor cells.

## Products Images



Western blot analysis of lysates from AD293 cells, primary antibody was diluted at 1:1000, 4° over night