

## STON2 rabbit pAb

<b>Catalog No :</b>	YT7374
<b>Reactivity :</b>	Human;Mouse
<b>Applications :</b>	WB;IF;FCM;ELISA;IHC
<b>Target :</b>	STON2
<b>Gene Name :</b>	STON2 STN2 STNB
<b>Protein Name :</b>	STON2
<b>Human Gene Id :</b>	85439
<b>Human Swiss Prot No :</b>	Q8WXE9
<b>Mouse Gene Id :</b>	108800
<b>Mouse Swiss Prot No :</b>	Q8BZ60
<b>Immunogen :</b>	Synthesized peptide derived from human STON2 AA range: 47-97
<b>Specificity :</b>	This antibody detects endogenous levels of STON2 at Human/Mouse
<b>Formulation :</b>	Liquid in PBS containing 50% glycerol, 0.5% BSA and 0.02% sodium azide.
<b>Source :</b>	Polyclonal, Rabbit,IgG
<b>Dilution :</b>	WB 1:500-2000; IF ICC 1:50-200;ELISA 1:2000-20000;IHC 1:50-200
<b>Purification :</b>	The antibody was affinity-purified from rabbit antiserum by affinity-chromatography using epitope-specific immunogen.
<b>Concentration :</b>	1 mg/ml
<b>Storage Stability :</b>	-15°C to -25°C/1 year(Do not lower than -25°C)

**Molecularweight :** 100kD

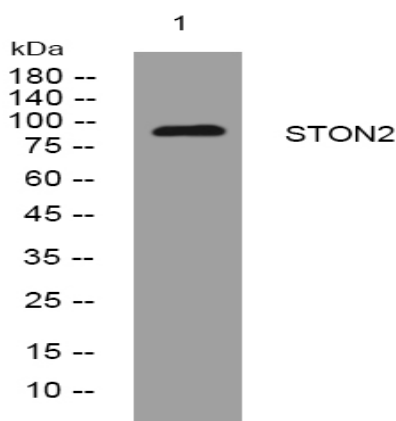
**Background :** This gene encodes a protein which is a membrane protein involved in regulating endocytotic complexes. The protein product is described as one of the clathrin-associated sorting proteins, adaptor molecules which ensure specific proteins are internalized. The encoded protein has also been shown to participate in synaptic vesicle recycling through interaction with synaptotagmin 1 required for neurotransmission. Multiple transcript variants encoding different isoforms have been found for this gene. [provided by RefSeq, Jan 2012],

**Function :** domain:The Asn-Pro-Phe (NPF) motifs, which are found in proteins involved in the endocytic pathway, mediate the interaction with the EH domain of SYT1, SYT2, EPS15, EPS15R and ITSN1.,function:Adapter protein involved in endocytic machinery. May be involved in the vesicle recycling. May facilitate clathrin-coated vesicle uncoating.,similarity:Belongs to the Stoned B family.,similarity:Contains 1 MHD (mu homology) domain.,similarity:Contains 1 SHD (stonin homology) domain.,subcellular location:Some fraction is membrane-associated.,subunit:Interacts with the second C2 domain of synaptotagmins SYT1 and SYT2. Interacts with EPS15, EPS15R and ITSN1. Interacts indirectly with the AP-2 adapter complex.,tissue specificity:Ubiquitous.,

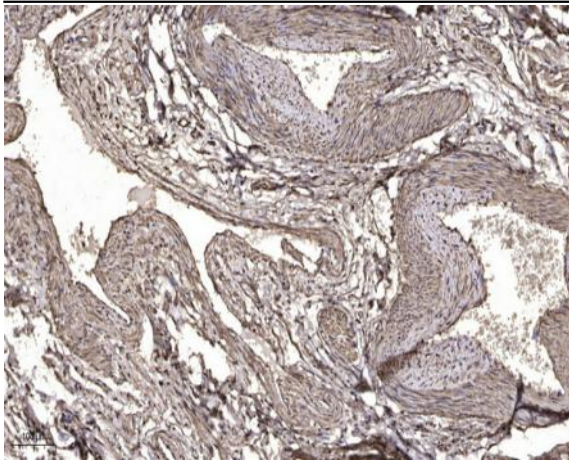
**Subcellular Location :** Cytoplasm . Membrane . Cell junction, synapse, synaptosome . Some fraction is membrane-associated.

**Expression :** Ubiquitous.

## Products Images



Western blot analysis of lysates from PC-12 cells, primary antibody was diluted at 1:1000, 4° over night



Immunohistochemical analysis of paraffin-embedded human oophoroma. 1, Antibody was diluted at 1:200(4° overnight). 2, Tris-EDTA,pH9.0 was used for antigen retrieval. 3,Secondary antibody was diluted at 1:200(room temperature, 45min).