

TVC rabbit pAb

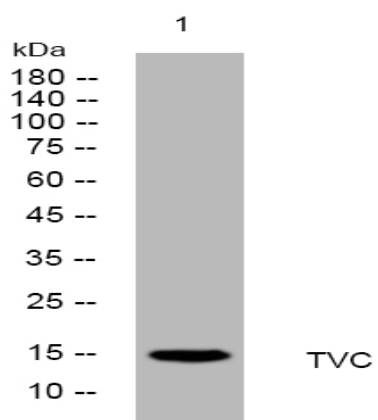
Catalog No :	YT7371
Reactivity :	Human
Applications :	WB
Target :	TVC
Gene Name :	TRGV3 TCRB
Protein Name :	TVC
Human Swiss Prot No :	P03979
Immunogen :	Synthesized peptide derived from human TVC AA range: 79-129
Specificity :	This antibody detects endogenous levels of TVC at Human
Formulation :	Liquid in PBS containing 50% glycerol, 0.5% BSA and 0.02% sodium azide.
Source :	Polyclonal, Rabbit,IgG
Dilution :	WB 1[?]500-2000
Purification :	The antibody was affinity-purified from rabbit antiserum by affinity-chromatography using epitope-specific immunogen.
Concentration :	1 mg/ml
Storage Stability :	-15°C to -25°C/1 year(Do not lower than -25°C)
Molecularweight :	15kD
Function :	miscellaneous:This is an aberrantly rearranged nucleotide sequence. Two bases are deleted at nucleotide position 357 in this clone. However, the protein sequence can be deduced from the mRNA sequence.,
Subcellular	Cell membrane .



Best Tools for immunology Research

Location :

Products Images



Western blot analysis of lysates from THP-1 cells, primary antibody was diluted at 1:1000, 4° over night