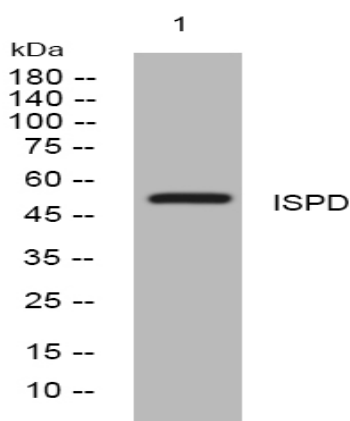


ISPD rabbit pAb

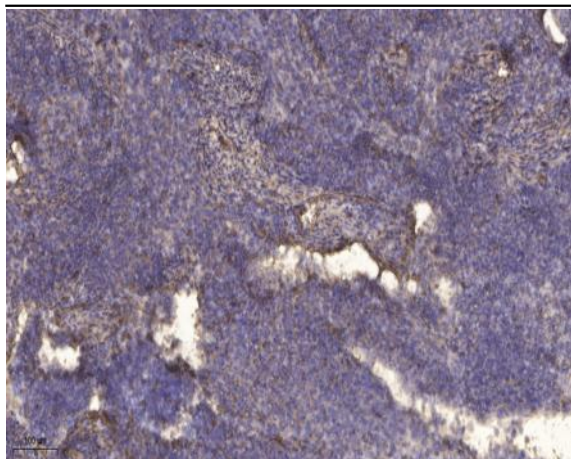
Catalog No :	YT7370
Reactivity :	Human;Mouse;Rat
Applications :	WB;ELISA;IHC
Target :	ISPD
Fields :	>>Pentose and glucuronate interconversions;>>Mannose type O-glycan biosynthesis;>>Metabolic pathways
Gene Name :	ISPD
Protein Name :	ISPD
Human Gene Id :	729920
Human Swiss Prot No :	A4D126
Mouse Gene Id :	75847
Mouse Swiss Prot No :	Q5RJG7
Rat Gene Id :	493574
Rat Swiss Prot No :	Q5S6T3
Immunogen :	Synthesized peptide derived from human ISPD AA range: 301-351
Specificity :	This antibody detects endogenous levels of ISPD at Human/Mouse/Rat
Formulation :	Liquid in PBS containing 50% glycerol, 0.5% BSA and 0.02% sodium azide.
Source :	Polyclonal, Rabbit,IgG
Dilution :	WB 1:500-2000;IHC 1:50-300; ELISA 2000-20000

Purification :	The antibody was affinity-purified from rabbit antiserum by affinity-chromatography using epitope-specific immunogen.
Concentration :	1 mg/ml
Storage Stability :	-15°C to -25°C/1 year(Do not lower than -25°C)
Molecularweight :	50kD
Background :	This gene encodes a 2-C-methyl-D-erythritol 4-phosphate cytidyltransferase-like protein. Mutations in this gene are the cause of Walker-Warburg syndrome. Alternate splicing results in multiple transcript variants. [provided by RefSeq, May 2012],
Function :	similarity:Belongs to the ispD family.,
Subcellular Location :	Cytoplasm, cytosol .
Expression :	Ubiquitously expressed, with high expression in brain.

Products Images



Western blot analysis of lysates from THP-1 cells, primary antibody was diluted at 1:1000, 4° over night



Immunohistochemical analysis of paraffin-embedded human cervical carcinoma. 1, Antibody was diluted at 1:200(4° overnight). 2, Tris-EDTA,pH9.0 was used for antigen retrieval. 3,Secondary antibody was diluted at 1:200(room temperature, 45min).