

DSEL rabbit pAb

Catalog No :	YT7368
Reactivity :	Human;Mouse
Applications :	WB
Target :	DSEL
Gene Name :	DSEL C18orf4 NCAG1
Protein Name :	DSEL
Human Gene Id :	92126
Human Swiss Prot No :	Q8IZU8
Mouse Gene Id :	319901
Mouse Swiss Prot No :	Q0VBN2
Immunogen :	Synthesized peptide derived from human DSEL AA range: 676-726
Specificity :	This antibody detects endogenous levels of DSEL at Human/Mouse
Formulation :	Liquid in PBS containing 50% glycerol, 0.5% BSA and 0.02% sodium azide.
Source :	Polyclonal, Rabbit,IgG
Dilution :	WB 1:500-2000
Purification :	The antibody was affinity-purified from rabbit antiserum by affinity-chromatography using epitope-specific immunogen.
Concentration :	1 mg/ml
Storage Stability :	-15°C to -25°C/1 year(Do not lower than -25°C)

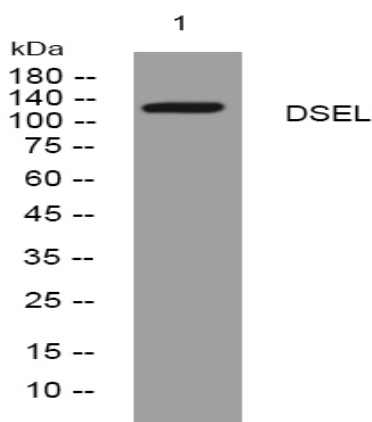
Molecularweight : 133kD

Function : similarity:Belongs to the dermatan-sulfate isomerase family.,tissue specificity:Expressed in different brain areas as well as in multiple other peripheral tissues.,

Subcellular Location : Membrane ; Multi-pass membrane protein .

Expression : Expressed in different brain areas as well as in multiple other peripheral tissues.

Products Images



Western blot analysis of lysates from HuvEc cells, primary antibody was diluted at 1:1000, 4° over night