

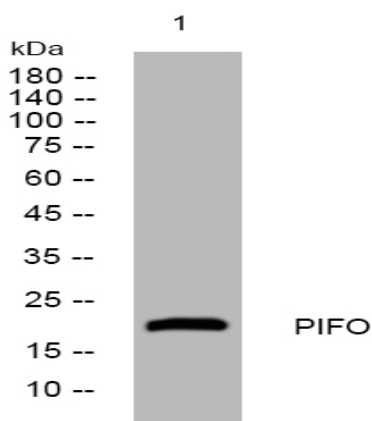
## PIFO rabbit pAb

<b>Catalog No :</b>	YT7359
<b>Reactivity :</b>	Human;Mouse
<b>Applications :</b>	WB;ELISA;IHC
<b>Target :</b>	PIFO
<b>Gene Name :</b>	PIFO C1orf88
<b>Protein Name :</b>	PIFO
<b>Human Gene Id :</b>	128344
<b>Human Swiss Prot No :</b>	Q8TCI5
<b>Mouse Gene Id :</b>	100503311
<b>Mouse Swiss Prot No :</b>	Q9D9W1
<b>Immunogen :</b>	Synthesized peptide derived from human PIFO AA range: 47-97
<b>Specificity :</b>	This antibody detects endogenous levels of PIFO at Human/Mouse
<b>Formulation :</b>	Liquid in PBS containing 50% glycerol, 0.5% BSA and 0.02% sodium azide.
<b>Source :</b>	Polyclonal, Rabbit,IgG
<b>Dilution :</b>	WB 1:500-2000;IHC 1:50-300; ELISA 2000-20000
<b>Purification :</b>	The antibody was affinity-purified from rabbit antiserum by affinity-chromatography using epitope-specific immunogen.
<b>Concentration :</b>	1 mg/ml
<b>Storage Stability :</b>	-15°C to -25°C/1 year(Do not lower than -25°C)

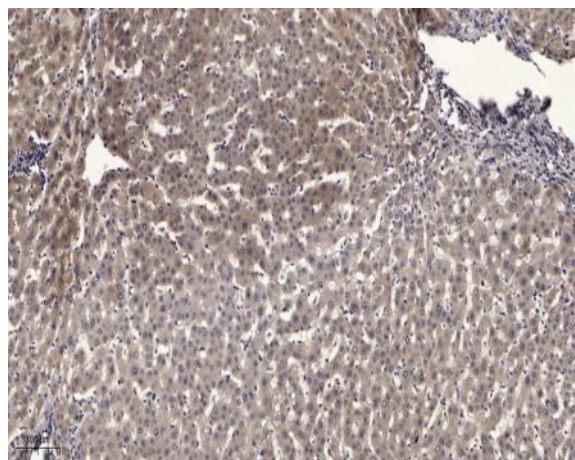
**Molecularweight :** 21kD**Subcellular Location :**

Cytoplasmic vesicle . Golgi apparatus, trans-Golgi network . Cytoplasm . Accumulates specifically at the basal body and ciliary necklace during the early steps of cilia assembly and disassembly, when structural, functional and regulatory proteins are delivered to cilia. At S phase, accumulates in vesicles and declines during mitosis. .

## Products Images



Western blot analysis of lysates from SH-SY5Y cells, primary antibody was diluted at 1:1000, 4° over night



Immunohistochemical analysis of paraffin-embedded human liver cancer. 1, Antibody was diluted at 1:200(4° overnight). 2, Tris-EDTA,pH9.0 was used for antigen retrieval. 3,Secondary antibody was diluted at 1:200(room temperature, 45min).