

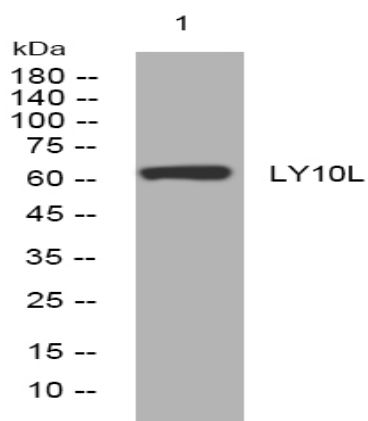
LY10L rabbit pAb

| | |
|------------------------------|---|
| Catalog No : | YT7357 |
| Reactivity : | Human |
| Applications : | WB |
| Target : | LY10L |
| Gene Name : | SP140L |
| Protein Name : | LY10L |
| Human Gene Id : | 93349 |
| Human Swiss Prot No : | Q9H930 |
| Immunogen : | Synthesized peptide derived from human LY10L AA range: 178-228 |
| Specificity : | This antibody detects endogenous levels of LY10L at Human |
| Formulation : | Liquid in PBS containing 50% glycerol, 0.5% BSA and 0.02% sodium azide. |
| Source : | Polyclonal, Rabbit,IgG |
| Dilution : | WB 1:500-2000 |
| Purification : | The antibody was affinity-purified from rabbit antiserum by affinity-chromatography using epitope-specific immunogen. |
| Concentration : | 1 mg/ml |
| Storage Stability : | -15°C to -25°C/1 year(Do not lower than -25°C) |
| Molecularweight : | 64kD |
| Function : | similarity:Contains 1 HSR domain.,similarity:Contains 1 PHD-type zinc finger.,similarity:Contains 1 SAND domain., |

**Subcellular
Location :**

nucleus,

Products Images



Western blot analysis of lysates from K562 cells, primary antibody was diluted at 1:1000, 4° over night