

SHF rabbit pAb

Catalog No :	YT7352
Reactivity :	Human;Mouse
Applications :	WB
Target :	SHF
Gene Name :	SHF
Protein Name :	SHF
Human Swiss Prot No :	Q7M4L6
Mouse Gene Id :	435684
Mouse Swiss Prot No :	Q8CG80
Immunogen :	Synthesized peptide derived from human SHF AA range: 163-213
Specificity :	This antibody detects endogenous levels of SHF at Human/Mouse
Formulation :	Liquid in PBS containing 50% glycerol, 0.5% BSA and 0.02% sodium azide.
Source :	Polyclonal, Rabbit,IgG
Dilution :	WB 1[?]500-2000
Purification :	The antibody was affinity-purified from rabbit antiserum by affinity-chromatography using epitope-specific immunogen.
Concentration :	1 mg/ml
Storage Stability :	-15°C to -25°C/1 year(Do not lower than -25°C)
Molecularweight :	47kD

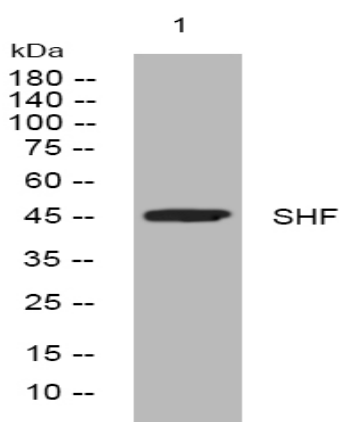
Function :

function:Adapter protein which may play a role in the regulation of apoptosis in response to PDGF.,PTM:May become phosphorylated upon binding to PDGFRA.,similarity:Contains 1 SH2 domain.,subunit:Interacts with phosphorylated 'Tyr-720' of PDGFRA via its SH2 domain.,tissue specificity:Expressed in skeletal muscle, brain, liver, prostate, testis, ovary, small intestine and colon.,

Expression :

Expressed in skeletal muscle, brain, liver, prostate, testis, ovary, small intestine and colon.

Products Images



Western blot analysis of lysates from MCF-7 cells, primary antibody was diluted at 1:1000, 4° over night