

**S2542 rabbit pAb**

<b>Catalog No :</b>	YT7344
<b>Reactivity :</b>	Human;Mouse;Rat
<b>Applications :</b>	WB
<b>Target :</b>	S2542
<b>Gene Name :</b>	SLC25A42
<b>Protein Name :</b>	S2542
<b>Human Gene Id :</b>	284439
<b>Human Swiss Prot No :</b>	Q86VD7
<b>Mouse Gene Id :</b>	73095
<b>Mouse Swiss Prot No :</b>	Q8R0Y8
<b>Rat Swiss Prot No :</b>	P0C546
<b>Immunogen :</b>	Synthesized peptide derived from human S2542 AA range: 7-57
<b>Specificity :</b>	This antibody detects endogenous levels of S2542 at Human/Mouse/Rat
<b>Formulation :</b>	Liquid in PBS containing 50% glycerol, 0.5% BSA and 0.02% sodium azide.
<b>Source :</b>	Polyclonal, Rabbit,IgG
<b>Dilution :</b>	WB 1[?]500-2000
<b>Purification :</b>	The antibody was affinity-purified from rabbit antiserum by affinity-chromatography using epitope-specific immunogen.
<b>Concentration :</b>	1 mg/ml

**Storage Stability :** -15°C to -25°C/1 year(Do not lower than -25°C)

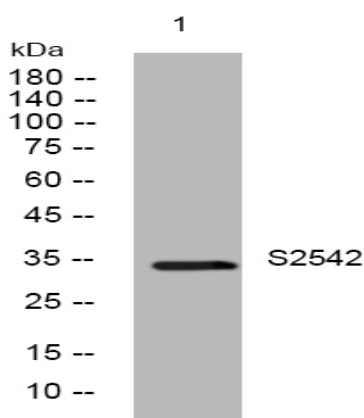
**Molecularweight :** 35kD

**Background :** This gene encodes a solute carrier family 25 protein. Solute carrier family 25 proteins are localized to mitochondria and play critical roles in the transport of molecules across the inner mitochondrial membrane. The encoded protein is a mitochondrial transporter for coenzyme A (CoA) and adenosine 3'&apos;5'&apos;-diphosphate. [provided by RefSeq, Feb 2012],

**Function :** similarity:Belongs to the mitochondrial carrier family.,similarity:Contains 3 Solcar repeats.,

**Subcellular Location :** Mitochondrion inner membrane ; Multi-pass membrane protein .

## Products Images



Western blot analysis of lysates from HEK293 cells, primary antibody was diluted at 1:1000, 4° over night