

## PSDE rabbit pAb

|                              |   |
|------------------------------|---|
| <b>Catalog No :</b>          | YT7334  |
| <b>Reactivity :</b>          | Human;Mouse   |
| <b>Applications :</b>        | WB;IHC  |
| <b>Target :</b>              | PSDE  |
| <b>Fields :</b>              | >>Proteasome;>>Alzheimer disease;>>Parkinson disease;>>Amyotrophic lateral sclerosis;>>Huntington disease;>>Spinocerebellar ataxia;>>Prion disease;>>Pathways of neurodegeneration - multiple diseases;>>Epstein-Barr virus infection |
| <b>Gene Name :</b>           | PSMD14 POH1   |
| <b>Protein Name :</b>        | PSDE  |
| <b>Human Gene Id :</b>       | 10213   |
| <b>Human Swiss Prot No :</b> | O00487  |
| <b>Mouse Gene Id :</b>       | 59029   |
| <b>Mouse Swiss Prot No :</b> | O35593  |
| <b>Immunogen :</b>           | Synthesized peptide derived from human PSDE AA range: 152-202   |
| <b>Specificity :</b>         | This antibody detects endogenous levels of PSDE at Human/Mouse  |
| <b>Formulation :</b>         | Liquid in PBS containing 50% glycerol, 0.5% BSA and 0.02% sodium azide.   |
| <b>Source :</b>              | Polyclonal, Rabbit,IgG  |
| <b>Dilution :</b>            | WB 1:500-2000;IHC 1:50-300  |
| <b>Purification :</b>        | The antibody was affinity-purified from rabbit antiserum by affinity-chromatography using epitope-specific immunogen.   |

**Concentration :** 1 mg/ml

**Storage Stability :** -15°C to -25°C/1 year(Do not lower than -25°C)

**Molecularweight :** 34kD

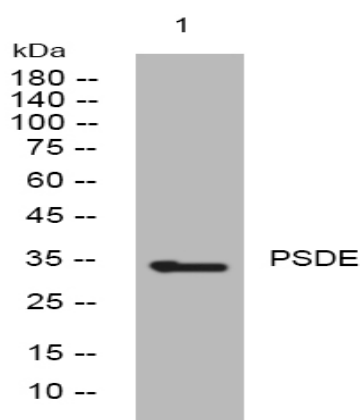
**Background :** This gene encodes a component of the 26S proteasome. The 26S proteasome is a large multiprotein complex that catalyzes the degradation of ubiquitinated intracellular proteins. The encoded protein is a component of the 19S regulatory cap complex of the 26S proteasome and mediates substrate deubiquitination. A pseudogene of this gene is also located on the long arm of chromosome 2. [provided by RefSeq, Feb 2012],

**Function :** catalytic activity:Ubiquitin C-terminal thioester + H(2)O = ubiquitin + a thiol.,function:Metalloprotease component of the 26S proteasome that specifically cleaves 'Lys-63'-linked polyubiquitin chains. The 26S proteasome is involved in the ATP-dependent degradation of ubiquitinated proteins. The function of the 'Lys-63'-specific deubiquitination of the proteasome is unclear.,similarity:Belongs to the peptidase M67A family. PSMD14 subfamily.,similarity:Contains 1 MPN (JAB/Mov34) domain.,subunit:Component of the 19S regulatory cap of the 26S proteasome.,tissue specificity:Widely expressed. Highest levels in heart and skeletal muscle.,

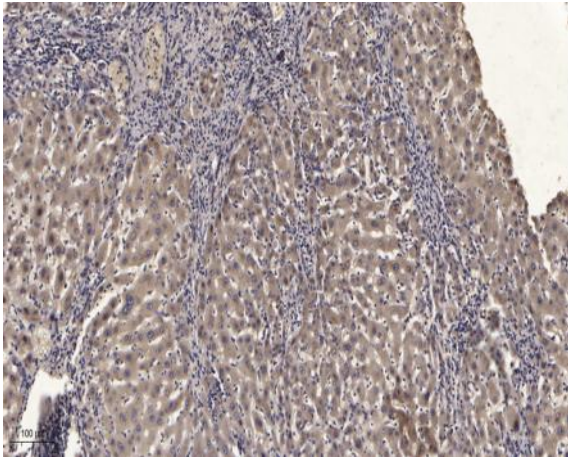
**Subcellular Location :** proteasome complex,nucleus,nucleoplasm,cytosol,proteasome regulatory particle, lid subcomplex,proteasome accessory complex,cytosolic proteasome complex,extracellular exosome,

**Expression :** Widely expressed. Highest levels in heart and skeletal muscle.

## Products Images



Western blot analysis of lysates from HeLa cells, primary antibody was diluted at 1:1000, 4° over night



Immunohistochemical analysis of paraffin-embedded human liver cancer. 1, Antibody was diluted at 1:200(4° overnight). 2, Tris-EDTA,pH9.0 was used for antigen retrieval. 3,Secondary antibody was diluted at 1:200(room temperature, 45min).