

## ISM2 rabbit pAb

<b>Catalog No :</b>	YT7333
<b>Reactivity :</b>	Human
<b>Applications :</b>	WB;IHC
<b>Target :</b>	ISM2
<b>Gene Name :</b>	ISM2 TAIL1 THSD3 PSEC0137
<b>Protein Name :</b>	ISM2
<b>Human Gene Id :</b>	145501
<b>Human Swiss Prot No :</b>	Q6H9L7
<b>Immunogen :</b>	Synthesized peptide derived from human ISM2 AA range: 65-115
<b>Specificity :</b>	This antibody detects endogenous levels of ISM2 at Human
<b>Formulation :</b>	Liquid in PBS containing 50% glycerol, 0.5% BSA and 0.02% sodium azide.
<b>Source :</b>	Polyclonal, Rabbit,IgG
<b>Dilution :</b>	WB 1:500-2000;IHC 1:50-300
<b>Purification :</b>	The antibody was affinity-purified from rabbit antiserum by affinity-chromatography using epitope-specific immunogen.
<b>Concentration :</b>	1 mg/ml
<b>Storage Stability :</b>	-15°C to -25°C/1 year(Do not lower than -25°C)
<b>Molecularweight :</b>	63kD
<b>Background :</b>	The protein encoded by this gene contains a type 1 thrombospondin domain, which is present in thrombospondin, a number of proteins involved in the complement pathway, as well as in extracellular matrix proteins. Two alternatively

spliced transcript variants encoding distinct isoforms have been observed.  
[provided by RefSeq, Mar 2009],

**Function :**

similarity:Belongs to the isthmin family.,similarity:Contains 1 AMOP domain.,similarity:Contains 1 TSP type-1 domain.,tissue specificity:Expressed at high levels in the placenta and at moderate levels in the pancreas, kidney, heart, liver, lung, brain and skeletal muscle.,

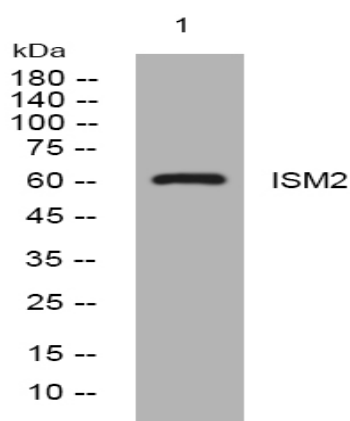
**Subcellular Location :**

Secreted .

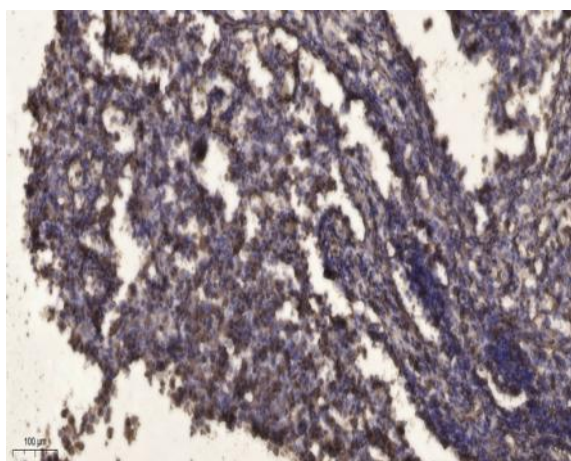
**Expression :**

Expressed at high levels in the placenta and at moderate levels in the pancreas, kidney, heart, liver, lung, brain and skeletal muscle.

## Products Images



Western blot analysis of lysates from HuvEc cells, primary antibody was diluted at 1:1000, 4° over night



Immunohistochemical analysis of paraffin-embedded human Squamous cell carcinoma of lung. 1, Antibody was diluted at 1:200(4° overnight). 2, Tris-EDTA,pH9.0 was used for antigen retrieval. 3,Secondary antibody was diluted at 1:200(room temperature, 45min).