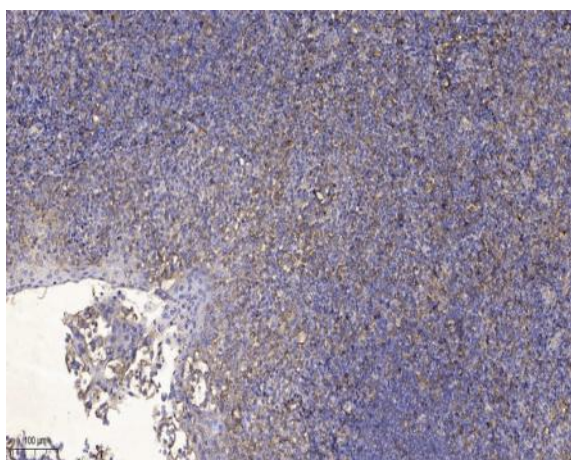


CQ108 rabbit pAb

Catalog No :	YT7329
Reactivity :	Human;Mouse;Rat
Applications :	IHC;IF
Target :	CQ108
Gene Name :	C17orf108 HSD24
Protein Name :	CQ108
Human Gene Id :	201229
Human Swiss Prot No :	A8MSI8
Mouse Gene Id :	66274
Mouse Swiss Prot No :	Q3UN90
Rat Gene Id :	497962
Rat Swiss Prot No :	B2RZD7
Immunogen :	Synthesized peptide derived from human CQ108 AA range: 3-53
Specificity :	This antibody detects endogenous levels of CQ108 at Human/Mouse/Rat
Formulation :	Liquid in PBS containing 50% glycerol, 0.5% BSA and 0.02% sodium azide.
Source :	Polyclonal, Rabbit,IgG
Dilution :	IHC 1:50-200. IF 1:50-200
Purification :	The antibody was affinity-purified from rabbit antiserum by affinity-chromatography using epitope-specific immunogen.

Concentration : 1 mg/ml**Storage Stability :** -15°C to -25°C/1 year(Do not lower than -25°C)**Molecularweight :** 9kD**Function :** sequence caution:Wrong choice of CDS.,similarity:Belongs to the UPF0631 family.,

Products Images



Immunohistochemical analysis of paraffin-embedded human tonsil. 1, Antibody was diluted at 1:200(4° overnight). 2, Tris-EDTA,pH9.0 was used for antigen retrieval. 3,Secondary antibody was diluted at 1:200(room temperature, 30min).