

## BEND2 rabbit pAb

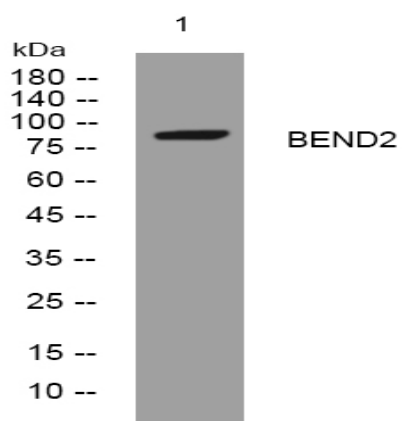
<b>Catalog No :</b>	YT7328
<b>Reactivity :</b>	Human
<b>Applications :</b>	WB
<b>Target :</b>	BEND2
<b>Gene Name :</b>	BEND2 CXorf20
<b>Protein Name :</b>	BEND2
<b>Human Gene Id :</b>	139105
<b>Human Swiss Prot No :</b>	Q8NDZ0
<b>Immunogen :</b>	Synthesized peptide derived from human BEND2 AA range: 48-98
<b>Specificity :</b>	This antibody detects endogenous levels of BEND2 at Human
<b>Formulation :</b>	Liquid in PBS containing 50% glycerol, 0.5% BSA and 0.02% sodium azide.
<b>Source :</b>	Polyclonal, Rabbit,IgG
<b>Dilution :</b>	WB 1:500-2000
<b>Purification :</b>	The antibody was affinity-purified from rabbit antiserum by affinity-chromatography using epitope-specific immunogen.
<b>Concentration :</b>	1 mg/ml
<b>Storage Stability :</b>	-15°C to -25°C/1 year(Do not lower than -25°C)
<b>Molecularweight :</b>	88kD
<b>Background :</b>	This gene encodes a protein which has two BEN domains in the C-terminus. These domains are found in proteins which participate in protein and DNA interactions which occur during chromatin restructuring or transcription.

---

Alternative splicing results in multiple transcript variants. [provided by RefSeq, Aug 2011],

---

## Products Images



Western blot analysis of lysates from KB cells, primary antibody was diluted at 1:1000, 4° over night