

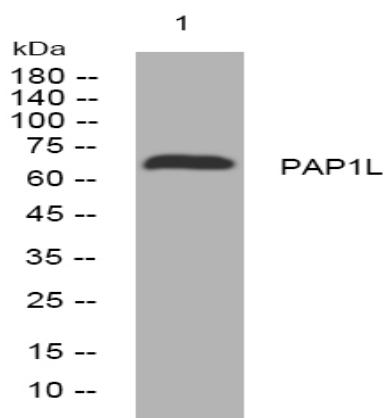
**PAP1L rabbit pAb**

<b>Catalog No :</b>	YT7327
<b>Reactivity :</b>	Human
<b>Applications :</b>	WB
<b>Target :</b>	PAP1L
<b>Fields :</b>	>>mRNA surveillance pathway;>>RNA degradation
<b>Gene Name :</b>	PABPC1L C20orf119
<b>Protein Name :</b>	PAP1L
<b>Human Gene Id :</b>	80336
<b>Human Swiss Prot No :</b>	Q4VXU2
<b>Immunogen :</b>	Synthesized peptide derived from human PAP1L AA range: 251-301
<b>Specificity :</b>	This antibody detects endogenous levels of PAP1L at Human
<b>Formulation :</b>	Liquid in PBS containing 50% glycerol, 0.5% BSA and 0.02% sodium azide.
<b>Source :</b>	Polyclonal, Rabbit,IgG
<b>Dilution :</b>	WB 1[?]500-2000
<b>Purification :</b>	The antibody was affinity-purified from rabbit antiserum by affinity-chromatography using epitope-specific immunogen.
<b>Concentration :</b>	1 mg/ml
<b>Storage Stability :</b>	-15°C to -25°C/1 year(Do not lower than -25°C)
<b>Molecularweight :</b>	68kD

**Function :** similarity:Belongs to the polyadenylate-binding protein type-1 family.,similarity:Contains 1 PABC domain.,similarity:Contains 4 RRM (RNA recognition motif) domains.,

**Subcellular Location :** extracellular exosome,

## Products Images



Western blot analysis of lysates from SW480 cells, primary antibody was diluted at 1:1000, 4° over night