

SPIT4 rabbit pAb

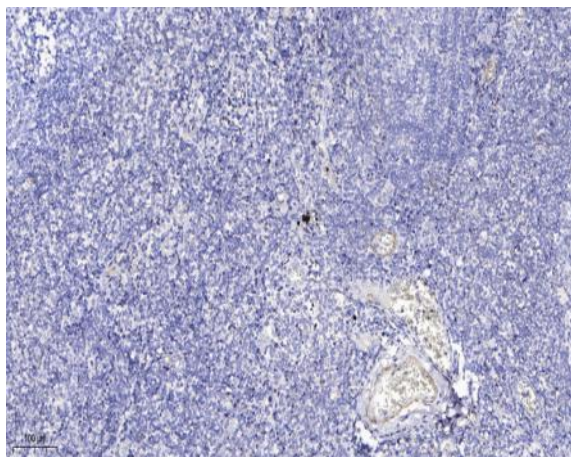
Catalog No :	YT7321
Reactivity :	Human;Mouse
Applications :	IHC;IF
Target :	SPIT4
Gene Name :	SPINT4 C20orf137
Protein Name :	SPIT4
Human Gene Id :	391253
Human Swiss Prot No :	Q6UDR6
Mouse Gene Id :	78239
Mouse Swiss Prot No :	Q9D263
Immunogen :	Synthesized peptide derived from human SPIT4 AA range: 3-53
Specificity :	This antibody detects endogenous levels of SPIT4 at Human/Mouse
Formulation :	Liquid in PBS containing 50% glycerol, 0.5% BSA and 0.02% sodium azide.
Source :	Polyclonal, Rabbit,IgG
Dilution :	IHC 1:50-200. IF 1:50-200
Purification :	The antibody was affinity-purified from rabbit antiserum by affinity-chromatography using epitope-specific immunogen.
Concentration :	1 mg/ml
Storage Stability :	-15°C to -25°C/1 year(Do not lower than -25°C)

Molecularweight : 11kD

Function : similarity:Contains 1 BPTI/Kunitz inhibitor domain.,

Subcellular Location : Secreted .

Products Images



Immunohistochemical analysis of paraffin-embedded human tonsil. 1, Antibody was diluted at 1:200(4° overnight). 2, Tris-EDTA,pH9.0 was used for antigen retrieval. 3,Secondary antibody was diluted at 1:200(room temperature, 30min).