

## CPSF5 rabbit pAb

<b>Catalog No :</b>	YT7319
<b>Reactivity :</b>	Human;Mouse;Rat
<b>Applications :</b>	WB
<b>Target :</b>	CPSF5
<b>Fields :</b>	>>mRNA surveillance pathway
<b>Gene Name :</b>	NUDT21 CFIM25 CPSF25 CPSF5
<b>Protein Name :</b>	CPSF5
<b>Human Gene Id :</b>	11051
<b>Human Swiss Prot No :</b>	O43809
<b>Mouse Gene Id :</b>	68219
<b>Mouse Swiss Prot No :</b>	Q9CQF3
<b>Rat Gene Id :</b>	291877
<b>Rat Swiss Prot No :</b>	Q4KM65
<b>Immunogen :</b>	Synthesized peptide derived from human CPSF5 AA range: 25-75
<b>Specificity :</b>	This antibody detects endogenous levels of CPSF5 at Human/Mouse/Rat
<b>Formulation :</b>	Liquid in PBS containing 50% glycerol, 0.5% BSA and 0.02% sodium azide.
<b>Source :</b>	Polyclonal, Rabbit,IgG
<b>Dilution :</b>	WB 1[?]500-2000
<b>Purification :</b>	The antibody was affinity-purified from rabbit antiserum by affinity-

chromatography using epitope-specific immunogen.

---

**Concentration :** 1 mg/ml

---

**Storage Stability :** -15°C to -25°C/1 year(Do not lower than -25°C)

---

**Molecularweight :** 25kD

---

**Background :** The protein encoded by this gene is one subunit of a cleavage factor required for 3' RNA cleavage and polyadenylation processing. The interaction of the protein with the RNA is one of the earliest steps in the assembly of the 3' end processing complex and facilitates the recruitment of other processing factors. This gene encodes the 25kD subunit of the protein complex, which is composed of four polypeptides. [provided by RefSeq, Jul 2008],

---

**Function :** function:Component of the cleavage factor Im (CFIm) complex that plays a key role in pre-mRNA 3'-processing. Involved in association with CPSF6 in pre-mRNA 3'-end poly(A) site cleavage and poly(A) addition. NUDT21/CPSF5 binds to cleavage and polyadenylation RNA substrates. Binds to, but does not hydrolyze mono- and di-adenosine nucleotides. May have a role in mRNA export.,miscellaneous:Has no hydrolase activity as missing metal-binding sites in NUDIX motif.,PTM:Acetylated mainly by p300/CBP, recruited to the complex by CPSF6. Acetylation decreases interaction with PAPA0. Deacetylated by the class I/II HDACs, HDAC1, HDAC3 and HDAC10, and by the class III HDACs, SIRT1 AND SIRT2.,similarity:Belongs to the Nudix hydrolase family. CPSF5 subfamily.,similarity:Contains 1 nudix hydrolase domain.,subcellular location:In punctate subnuclear structures localized adjacent to nuclear speckles, called

---

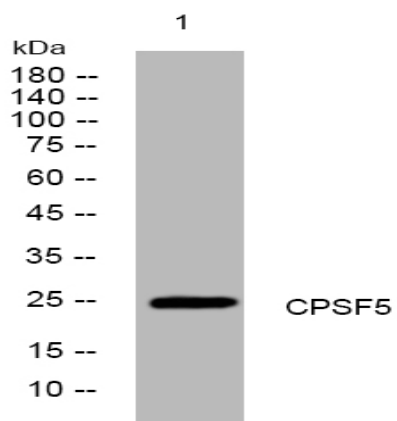
**Subcellular Location :** Nucleus . Cytoplasm . Shuttles between the nucleus and the cytoplasm in a transcription- and XPO1/CRM1-independent manner, most probably in complex with the cleavage factor Im complex (CFIm) (PubMed:19864460). In punctate subnuclear structures localized adjacent to nuclear speckles, called paraspeckles (PubMed:15169763). .

---

**Expression :** Expressed in the heart, brain, placenta, lung, liver, skeletal muscle, kidney and pancreas.

---

## Products Images



Western blot analysis of lysates from HpeG2 cells, primary antibody was diluted at 1:1000, 4° over night