

MRT4 rabbit pAb

Catalog No :	YT7314
Reactivity :	Human;Mouse
Applications :	WB;IHC
Target :	MRT4
Gene Name :	MRTO4 C1orf33 MRT4
Protein Name :	MRT4
Human Gene Id :	51154
Human Swiss Prot No :	Q9UKD2
Mouse Gene Id :	69902
Mouse Swiss Prot No :	Q9D0I8
Immunogen :	Synthesized peptide derived from human MRT4 AA range: 103-153
Specificity :	This antibody detects endogenous levels of MRT4 at Human/Mouse
Formulation :	Liquid in PBS containing 50% glycerol, 0.5% BSA and 0.02% sodium azide.
Source :	Polyclonal, Rabbit,IgG
Dilution :	WB 1:500-2000;IHC 1:50-300
Purification :	The antibody was affinity-purified from rabbit antiserum by affinity-chromatography using epitope-specific immunogen.
Concentration :	1 mg/ml
Storage Stability :	-15°C to -25°C/1 year(Do not lower than -25°C)

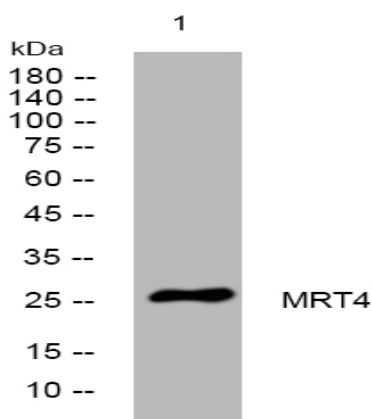
Molecularweight : 26kD

Background : This gene encodes a protein sharing a low level of sequence similarity with ribosomal protein P0. While the precise function of the encoded protein is currently unknown, it appears to be involved in mRNA turnover and ribosome assembly. [provided by RefSeq, Jul 2008],

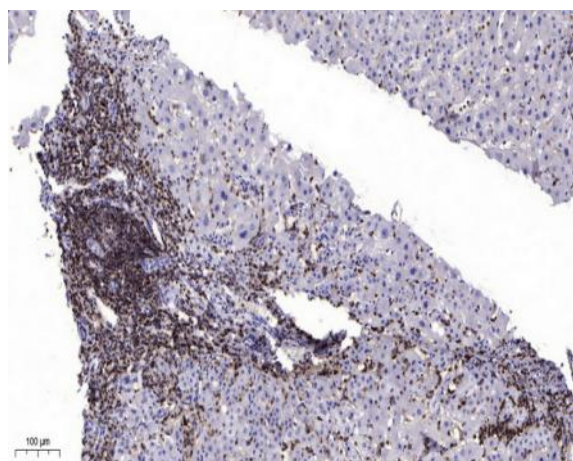
Function : function:Involved in mRNA turnover and ribosome assembly.,similarity:Belongs to the ribosomal protein L10P family.,

Subcellular Location : Nucleus, nucleolus . Cytoplasm . Shuttles between the nucleus and the cytoplasm. .

Products Images



Western blot analysis of lysates from THP-1 cells, primary antibody was diluted at 1:1000, 4° over night



Immunohistochemical analysis of paraffin-embedded human liver cancer. 1, Antibody was diluted at 1:200(4° overnight). 2, Tris-EDTA,pH9.0 was used for antigen retrieval. 3,Secondary antibody was diluted at 1:200(room temperature, 45min).