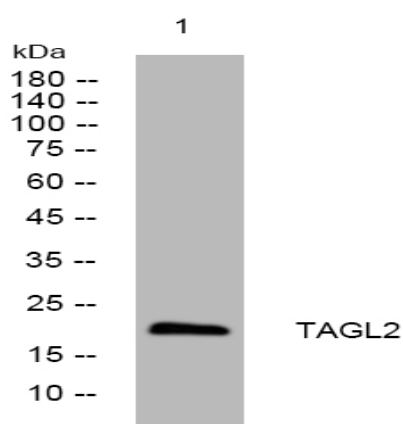


## TAGL2 rabbit pAb

<b>Catalog No :</b>	YT7313
<b>Reactivity :</b>	Human;Mouse;Rat
<b>Applications :</b>	WB
<b>Target :</b>	TAGL2
<b>Gene Name :</b>	TAGLN2 KIAA0120 CDABP0035
<b>Protein Name :</b>	TAGL2
<b>Human Gene Id :</b>	8407
<b>Human Swiss Prot No :</b>	P37802
<b>Mouse Gene Id :</b>	21346
<b>Mouse Swiss Prot No :</b>	Q9WVA4
<b>Rat Gene Id :</b>	304983
<b>Rat Swiss Prot No :</b>	Q5XFX0
<b>Immunogen :</b>	Synthesized peptide derived from human TAGL2 AA range: 90-140
<b>Specificity :</b>	This antibody detects endogenous levels of TAGL2 at Human/Mouse/Rat
<b>Formulation :</b>	Liquid in PBS containing 50% glycerol, 0.5% BSA and 0.02% sodium azide.
<b>Source :</b>	Polyclonal, Rabbit,IgG
<b>Dilution :</b>	WB 1:500-2000
<b>Purification :</b>	The antibody was affinity-purified from rabbit antiserum by affinity-chromatography using epitope-specific immunogen.

<b>Concentration :</b>	1 mg/ml
<b>Storage Stability :</b>	-15°C to -25°C/1 year(Do not lower than -25°C)
<b>Molecularweight :</b>	22kD
<b>Background :</b>	The protein encoded by this gene is similar to the protein transgelin, which is one of the earliest markers of differentiated smooth muscle. The specific function of this protein has not yet been determined, although it is thought to be a tumor suppressor. Multiple transcript variants encoding different isoforms have been found for this gene. [provided by RefSeq, Mar 2013],
<b>Function :</b>	similarity:Belongs to the calponin family.,similarity:Contains 1 calponin-like repeat.,similarity:Contains 1 CH (calponin-homology) domain.,
<b>Subcellular Location :</b>	cell-cell adherens junction,vesicle,extracellular exosome,
<b>Expression :</b>	Expressed in epididymis (at protein level).

## Products Images



Western blot analysis of lysates from HCT116 cells, primary antibody was diluted at 1:1000, 4° over night