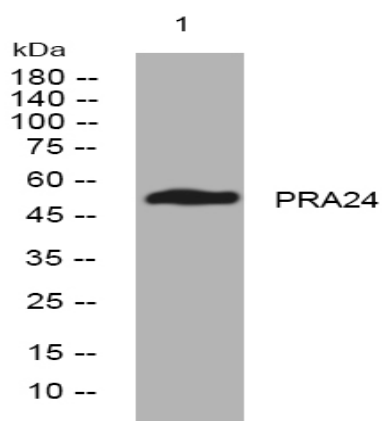


PRA24 rabbit pAb

Catalog No :	YT7312
Reactivity :	Human;Rat;Mouse;
Applications :	WB
Target :	PRA24
Gene Name :	PRAMEF24
Protein Name :	PRA24
Human Swiss Prot No :	A6NMC2
Immunogen :	Synthesized peptide derived from human PRA24 AA range: 82-132
Specificity :	This antibody detects endogenous levels of PRA24 at Human
Formulation :	Liquid in PBS containing 50% glycerol, 0.5% BSA and 0.02% sodium azide.
Source :	Polyclonal, Rabbit,IgG
Dilution :	WB 1[?]500-2000
Purification :	The antibody was affinity-purified from rabbit antiserum by affinity-chromatography using epitope-specific immunogen.
Concentration :	1 mg/ml
Storage Stability :	-15°C to -25°C/1 year(Do not lower than -25°C)
Molecularweight :	52kD
Function :	similarity:Belongs to the PRAME family.,similarity:Contains 3 LRR (leucine-rich) repeats.,

Products Images



Western blot analysis of lysates from HCT116 cells, primary antibody was diluted at 1:1000, 4° over night