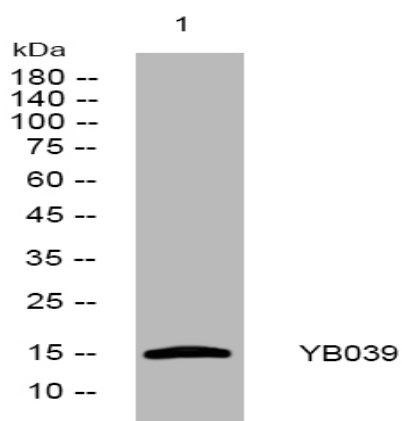


**Mitoregulin rabbit pAb**

<b>Catalog No :</b>	YT7302
<b>Reactivity :</b>	Human;Mouse
<b>Applications :</b>	WB
<b>Target :</b>	YB039
<b>Gene Name :</b>	LINC00116 NCRNA00116 MTLN
<b>Protein Name :</b>	YB039 Mitoregulin
<b>Human Swiss Prot No :</b>	Q8NCU8
<b>Mouse Swiss Prot No :</b>	Q8BT35
<b>Immunogen :</b>	Synthesized peptide derived from human YB039 AA:20-40
<b>Specificity :</b>	This antibody detects endogenous levels of YB039 at Human/Mouse
<b>Formulation :</b>	Liquid in PBS containing 50% glycerol, 0.5% BSA and 0.02% sodium azide.
<b>Source :</b>	Polyclonal, Rabbit,IgG
<b>Dilution :</b>	WB 1[?]500-2000
<b>Purification :</b>	The antibody was affinity-purified from rabbit antiserum by affinity-chromatography using epitope-specific immunogen.
<b>Concentration :</b>	1 mg/ml
<b>Storage Stability :</b>	-15°C to -25°C/1 year(Do not lower than -25°C)
<b>Molecularweight :</b>	15kD
<b>Function :</b>	caution:It is uncertain whether Met-1 or Met-83 is the initiator.,

**Subcellular  
Location :**

Mitochondrion inner membrane ; Single-pass membrane protein . Preferentially binds to cardiolipin relative to other common cell membrane lipids .

**Products Images**

Western blot analysis of lysates from MCF-7 cells, primary antibody was diluted at 1:1000, 4° over night