

## SYPL2 rabbit pAb

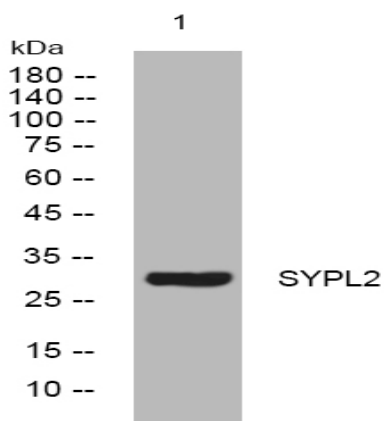
<b>Catalog No :</b>	YT7301
<b>Reactivity :</b>	Human;Mouse
<b>Applications :</b>	WB
<b>Target :</b>	SYPL2
<b>Gene Name :</b>	SYPL2
<b>Protein Name :</b>	SYPL2
<b>Human Gene Id :</b>	284612
<b>Human Swiss Prot No :</b>	Q5VXT5
<b>Mouse Gene Id :</b>	17306
<b>Mouse Swiss Prot No :</b>	O89104
<b>Immunogen :</b>	Synthesized peptide derived from human SYPL2 AA range: 160-210
<b>Specificity :</b>	This antibody detects endogenous levels of SYPL2 at Human/Mouse
<b>Formulation :</b>	Liquid in PBS containing 50% glycerol, 0.5% BSA and 0.02% sodium azide.
<b>Source :</b>	Polyclonal, Rabbit,IgG
<b>Dilution :</b>	WB 1:500-2000
<b>Purification :</b>	The antibody was affinity-purified from rabbit antiserum by affinity-chromatography using epitope-specific immunogen.
<b>Concentration :</b>	1 mg/ml
<b>Storage Stability :</b>	-15°C to -25°C/1 year(Do not lower than -25°C)

**Molecularweight :** 30kD

**Function :** function:Involved in communication between the T-tubular and junctional sarcoplasmic reticulum (SR) membranes.,similarity:Belongs to the synaptophysin/synaptobrevin family.,similarity:Contains 1 MARVEL domain.,subcellular location:Triad junction, the junctional complex between the transverse tubule and the sarcoplasmic reticulum.,

**Subcellular Location :** Membrane ; Multi-pass membrane protein . Triad junction, the junctional complex between the transverse tubule and the sarcoplasmic reticulum. .

## Products Images



Western blot analysis of lysates from HpeG2 cells, primary antibody was diluted at 1:1000, 4° over night