

RTP4 rabbit pAb

Catalog No :	YT7299
Reactivity :	Human;Mouse
Applications :	WB
Target :	RTP4
Gene Name :	RTP4 IFRG28
Protein Name :	RTP4
Human Gene Id :	64108
Human Swiss Prot No :	Q96DX8
Mouse Gene Id :	67775
Mouse Swiss Prot No :	Q9ER80
Immunogen :	Synthesized peptide derived from human RTP4 AA range: 189-239
Specificity :	This antibody detects endogenous levels of RTP4 at Human/Mouse
Formulation :	Liquid in PBS containing 50% glycerol, 0.5% BSA and 0.02% sodium azide.
Source :	Polyclonal, Rabbit,IgG
Dilution :	WB 1:500-2000
Purification :	The antibody was affinity-purified from rabbit antiserum by affinity-chromatography using epitope-specific immunogen.
Concentration :	1 mg/ml
Storage Stability :	-15°C to -25°C/1 year(Do not lower than -25°C)

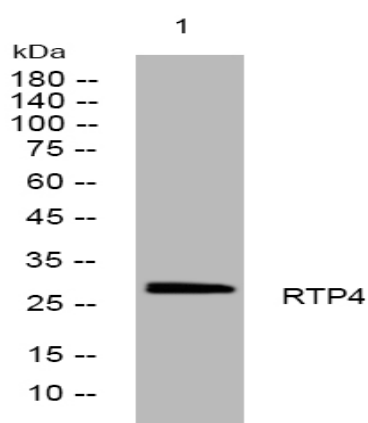
Molecularweight : 27kD

Function : induction:By interferons.,similarity:Belongs to the TMEM7 family.,

Subcellular Location : Membrane ; Single-pass type III membrane protein .

Expression : Expressed in circumvallate papillae and testis.

Products Images



Western blot analysis of lysates from A431 cells, primary antibody was diluted at 1:1000, 4° over night