

OVOS2 rabbit pAb

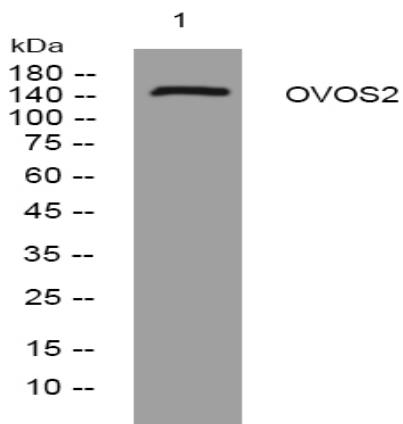
Catalog No :	YT7296
Reactivity :	Human;Rat;Mouse;
Applications :	WB
Target :	OVOS2
Gene Name :	OVOS2
Protein Name :	OVOS2
Human Swiss Prot No :	Q6IE36
Immunogen :	Synthesized peptide derived from human OVOS2 AA range: 660-710
Specificity :	This antibody detects endogenous levels of OVOS2 at Human
Formulation :	Liquid in PBS containing 50% glycerol, 0.5% BSA and 0.02% sodium azide.
Source :	Polyclonal, Rabbit,IgG
Dilution :	WB 1[?]500-2000
Purification :	The antibody was affinity-purified from rabbit antiserum by affinity-chromatography using epitope-specific immunogen.
Concentration :	1 mg/ml
Storage Stability :	-15°C to -25°C/1 year(Do not lower than -25°C)
Molecularweight :	158kD
Function :	function:Is able to inhibit all four classes of proteinases by a unique 'trapping' mechanism.,similarity:Belongs to the protease inhibitor I39 (alpha-2-macroglobulin) family.,subunit:Homotetramer.,
Subcellular	Secreted .



Best Tools for immunology Research

Location :

Products Images



Western blot analysis of lysates from MDA-MB cells, primary antibody was diluted at 1:1000, 4° over night