

KCMF1 rabbit pAb

Catalog No :	YT7292
Reactivity :	Human;Mouse
Applications :	WB
Target :	KCMF1
Gene Name :	KCMF1 FIGC ZZZ1
Protein Name :	KCMF1
Human Gene Id :	56888
Human Swiss Prot No :	Q9P0J7
Mouse Gene Id :	74287
Mouse Swiss Prot No :	Q80UY2
Immunogen :	Synthesized peptide derived from human KCMF1 AA range: 126-176
Specificity :	This antibody detects endogenous levels of KCMF1 at Human/Mouse
Formulation :	Liquid in PBS containing 50% glycerol, 0.5% BSA and 0.02% sodium azide.
Source :	Polyclonal, Rabbit,IgG
Dilution :	WB 1:500-2000
Purification :	The antibody was affinity-purified from rabbit antiserum by affinity-chromatography using epitope-specific immunogen.
Concentration :	1 mg/ml
Storage Stability :	-15°C to -25°C/1 year(Do not lower than -25°C)

Molecularweight : 42kD

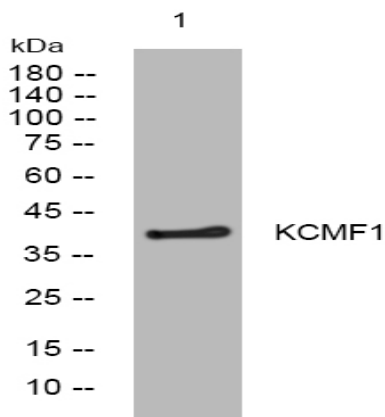
Function :

function:Has intrinsic E3 ubiquitin ligase activity and promotes ubiquitination.,induction:Up-regulated by basic fibroblast growth factor (bFGF) in gastric cancer cells.,similarity:Belongs to the KCMF1 family.,similarity:Contains 1 C2H2-type zinc finger.,similarity:Contains 1 ZZ-type zinc finger.,tissue specificity:Spleen, small intestine, ovary, peripheral blood, lung, kidney and pancreas. Expressed at low levels in the thymus, prostate, testis, colon, heart, brain, placenta and liver.,

Expression :

Spleen, small intestine, ovary, peripheral blood, lung, kidney and pancreas. Expressed at low levels in the thymus, prostate, testis, colon, heart, brain, placenta and liver.

Products Images



Western blot analysis of lysates from MCF-7 cells, primary antibody was diluted at 1:1000, 4° over night